

Crosby Pad Eyes S-264

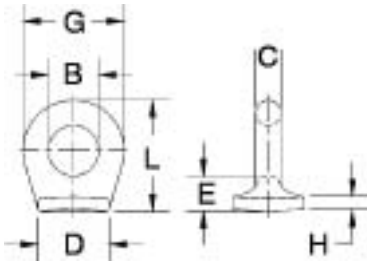
Forged Steel - Quenched and Tempered.

Forged from 1035 Carbon Steel.

Excellent welding qualities.

Widely used on farm machinery, trucks, steel hulled marine vessels and material handling equipment.

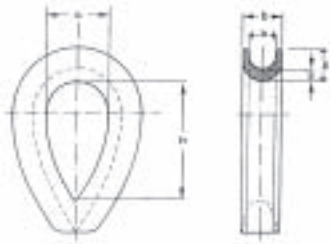
Reference American Welding Society specifications for proper welding procedures.



Size number*	S-264 stock number	Weight per 100 (kg)	Dimensions (mm)						
			B	C	D	E	G	H	L
* 0	1090722	1.27	6.35	4.85	16	7.85	16	2.3	19.1
* 1	1090740	2.95	9.65	6.35	22.4	10.4	22.4	3.3	26.2
* 1.5	1090768	4.72	16	6.35	25.4	11.2	28.7	4.05	33.3
2	1090786	9.57	19.1	9.65	26.9	12.7	38.1	4.85	41.4
4	1090802	23.7	25.4	14.2	36.6	19.8	54	5.6	59.5
5	1090820	37.4	31.8	17.5	44.5	20.6	67	6.35	70

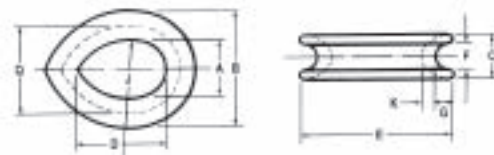
*Meets the requirements of Military Specification MS-51930A

Terminations



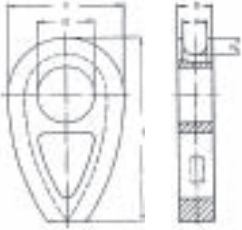
Ordinary Thimble - to DIN 3090

Nominal size (dia of rope)	a	b	c	s	p (min)	h	Approximate weight per 100 pieces
mm	mm	mm	mm	mm	mm	mm	kg
4	5	9	10	2.1	5.1	20	1.2
6	7	12	15	2.6	7.1	30	2.8
8	9	13	20	4	11	40	5.7
10	11	16	25	5	14	50	15.2
12	13	19	30	6	16	60	24
14	16	22	35	7	17	70	38
16	18	25	40	8	19	80	52
18	20	27	45	9	21	90	66
20	22	30	50	10	23	100	88
22	24	33	55	10	24	110	104
24	26	37	60	11	27	120	129
26	29	46	65	12	30	130	260
28	31	50	70	12	33	140	277
32	35	55	80	14	38	160	440
36	40	60	90	16	42	180	460
40	44	65	100	18	46	200	700
44	48	70	110	20	53	220	1000



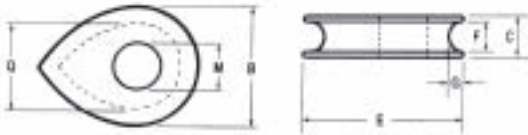
Ordinary Thimble

Nominal size (dia of rope)	A	B	C (min)	D	E	F (min)	G	J (approx)	K (min)	Q
mm	mm	mm	mm	mm	mm	mm	mm	mm	mm	mm
8	22.2	38.1	12.7	33.3	54.0	7.9	4.0	63.5	4.0	30.2
9	25.4	47.6	14.3	38.1	63.5	10.3	6.4	76.2	4.8	34.9
11	28.6	54.0	17.5	41.3	73.0	12.7	7.9	76.2	4.8	38.1
13	31.8	58.7	20.6	44.4	79.4	14.3	7.9	88.9	5.6	42.9
14	31.8	58.7	20.6	44.4	79.4	14.3	7.9	88.9	5.6	42.9
16	41.3	74.6	22.2	58.7	98.4	15.9	8.7	114	7.9	57.2
17	44.4	79.4	28.6	66.7	108	19.0	9.5	127	7.9	60.3
19	50.8	92.1	28.6	73.0	124	20.6	11.1	152	9.5	69.8
21	50.8	92.1	28.6	73.0	124	20.6	11.1	152	9.5	69.8
22	57.2	102	31.8	82.6	133	22.2	12.7	165	9.5	76.2
24	63.5	110	33.3	92.1	146	25.4	12.7	178	10.3	84.1
25	69.8	119	34.9	108	162	27.0	14.3	203	10.3	90.5
29	76.2	133	38.1	111	178	28.6	15.9	229	12.7	102
32	95.2	152	41.3	133	197	33.3	15.9	254	12.7	121
35	105	175	47.6	152	229	38.1	19.0	305	15.9	137
38	114	197	54.0	165	254	41.3	23.8	330	17.5	149



Solid Thimble - to DIN 3091

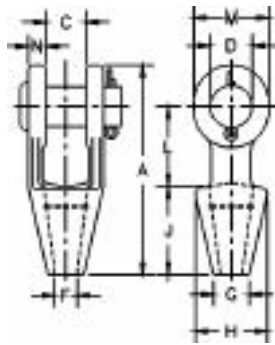
Nominal size (dia of rope)	a	b	d (min)	c	h	l	Approximate weight per 100 pieces
mm	mm	mm	mm	mm	mm	mm	kg
8	9	15	17	40	4.5	66	18.1
10	11	17.5	21	50	6	82	31.8
12	13	20	24	60	7.5	98	51.5
14	16	23.5	29	70	9	114	79.9
16	18	26	32	80	10.5	130	89.5
18	20	28.5	35	90	12	145	121
20	22	31	40	100	13.5	161	161
22	24	33.5	43	110	15	177	211
24	26	36	46	120	16.5	193	271
26	29	39.5	49	130	18	209	355
28	31	42	52	140	20	224	420
32	35	47	58	160	23	256	630
36	40	53	65	180	26	288	884
40	44	58	71	200	29	320	1100
44	48	63	76	220	32	352	1500



Solid Thimble - to BS464:1958

Nominal size (dia of rope)	Q	B	C	E	F (min)	G	M (max)
mm	mm	mm	mm	mm	mm	mm	mm
8	25.4	34.9	11.1	47.6	7.9	4.8	12.7
9	31.8	44.4	14.3	57.2	11.1	6.4	15.9
11	38.1	52.4	17.5	69.8	12.7	7.1	19.0
13	44.4	60.3	20.6	82.6	14.3	7.9	22.2
14	44.4	60.3	20.6	82.6	14.3	7.9	22.2
16	50.8	69.8	22.2	95.2	15.9	9.5	25.4
18	57.2	79.4	25.4	105	19.0	11.1	28.6
19	63.5	85.7	28.6	118	22.2	11.1	31.8
20	63.5	85.7	28.6	118	22.2	11.1	31.8
22	69.8	95.2	31.8	127	23.8	12.7	34.9
24	76.2	105	33.3	140	25.4	14.3	38.1
26	82.6	114	36.5	152	27.0	15.9	41.3
28	88.9	124	39.7	165	30.2	17.5	44.4
32	102	140	44.4	191	33.3	19.0	50.8
35	114	156	50.8	210	38.1	20.6	57.2
38	127	171	57.2	235	41.3	22.2	63.5

Crosby Open Spelter Socket G-416



Forged Steel Sockets through 38 mm, cast alloy steel 40 mm through 100 mm. Spelter socket terminations have an efficiency rating of 100%, based on the catalogue strength of wire rope. Ratings are based on recommended use with 6 x 7, 6 x 19, or 6 x 37, IPS or XIP (EIP), XXIP (EEIP), RRL, FC, or IWRC wire rope.

Open Grooved Sockets meet the performance requirements of Federal Specification RR-S-550D, Type A, except for those provisions required of the contractor.

NOTICE: All cast steel sockets 40 mm and larger are magnetic particle inspected and ultrasonic inspected. Proof testing available on special order.

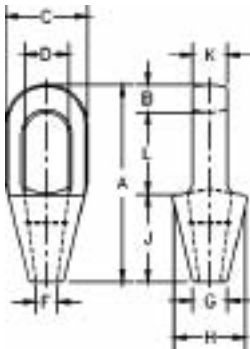
Drawing illustrates one groove used on sockets 6 mm through 19 mm. Sizes 22 mm through 38 mm use 2 grooves. Sizes 40 mm and larger use 3 grooves.

Rope dia. (mm)*	Structural strand dia. (mm)	Stock no.	Weight each (kg)	Dimensions (mm)									
		G-416 galv.		A	C	D	F	G	H	J	L	M	N
6-7	-	1039619	0.5	116	19.1	17.5	9.65	17.5	39.6	57	39.6	33.3	9.1
8-10	-	1039637	0.59	123	20.6	20.6	12.7	20.6	42.9	57	44.5	38.1	11.2
11-13	-	1039655	1.02	141	25.4	25.4	14.2	23.9	47.8	63.5	51	47.8	12.7
14-16	12-13	1039673	1.63	171	31.8	30.2	17.5	28.7	57	76	63.5	57	14.2
18	14-16	1039691	2.64	202	38.1	35.1	20.6	31.8	66.5	89	76	66.5	15.7
20-22	18-19	1039717	4.38	235	44.5	41.4	23.9	38.1	82.5	102	89	79.5	20.3
24-26	20-22	1039735	7.03	268	51	51	28.7	44.5	95.5	114	102	95.5	22.4
28-30	24-26	1039753	9.75	300	57	57	31.8	51	105	127	117	105	25.4
32-35	28	1039771	14.1	335	63.5	63.5	38.1	57	121	140	127	121	28.7
38	30-32	1039799	21.4	384	76	70	41.4	70	133	152	152	137	30.2
* 40-42	33-35	1039815	24.9	413	76	76	44.5	76	140	165	165	146	33.3
* 44-48	36-40	1039833	37.2	464	89	89	51	79.5	162	191	178	165	39.6
* 50-54	42-45	1039851	59	546	102	95.5	57	95.5	187	216	229	178	46
* 56-60	46-48	1039879	76	597	114	108	63.5	102	210	229	254	197	54
* 64-67	50-54	1041633	114	648	127	121	73	114	235	248	274	216	60.5
* 70-73	56-62	1041651	143	692	133	127	79	124	267	279	279	229	73
* 75-80	64-67	1041679	172	737	146	133	86	133	282	305	287	241	76
* 82-86	70-73	1041697	197	784	159	140	92	146	302	330	300	254	79
* 88-92	76-80	1041713	255	845	171	152	98.5	165	314	356	318	274	82.5
* 94-102	-	1041731	355	921	191	178	108	184	346	381	343	318	89

*Cast Alloy Steel

⚠ See WIRELOCK® warning and application instructions on page 52 of the Crosby Group Inc. general catalogue, April 2006

Crosby Closed Spelter Socket G-417



Forged Steel Sockets through 38 mm, cast alloy steel 40 mm through 100 mm.

Spelter socket terminations have an efficiency rating of 100%, based on the catalogue strength of wire rope. Ratings are based on the recommended use with 6 x 7, 6 x 19 or 6 x 37, IPS or XIP (EIP) , XXIP (EEIP), RRL, FC or IWRC wire rope.

Closed grooved Sockets meet the performance requirements of Federal Specification RR-S-550D, Type B, except for those provisions required of the contractor.

NOTE: All cast steel sockets 40 mm and larger are magnetic particle inspected and ultrasonic inspected. Proof testing available on special order.

Drawing illustrates one groove used on sockets 6 mm through 19 mm. Sizes 22 mm through 38 mm use 2 grooves. Sizes 40 mm and larger use 3 grooves.

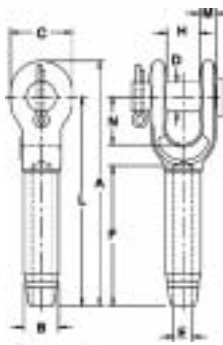
Rope dia. (mm)*	Structural strand dia. (mm)	Stock no.	Weight each (kg)	Dimensions (mm)									
				G-417 galv.	A	B	C	D**	F	G	H	J	K
6-7	-	1039897	0.23	116	12.7	39.6	22.4	9.65	17.5	39.6	57.2	12.7	46
8-10	-	1039913	0.34	125	15.8	42.9	24.6	12.7	20.6	42.9	57.2	17.5	52.3
11-13	-	1039931	0.68	140	17.5	51	29.5	14.2	23.9	51	63.5	22.4	58.7
14-16	12-13	1039959	1.13	162	20.6	67	35.8	17.5	30.2	67	76.2	25.4	65
18	14-16	1039977	1.92	194	26.9	76.2	42.2	22.4	33.3	70	89	31.8	77.7
20-22	18-19	1039995	3.28	226	33.3	92	49.3	25.4	38.1	82.5	102	38.1	90.5
24-26	20-22	1040019	4.76	254	36.6	105	58.5	28.7	44.5	95.5	114	44.5	103
28-30	24-26	1040037	6.46	283	39.6	114	65	31.8	51	105	127	51	116
32-35	28	1040055	8.95	309	41.4	127	71	38.1	58.5	119	138	56.5	129
38	30-32	1040073	13.24	355	49.3	137	81	41.4	70.5	132	151	62.5	155
* 40-42	33-35	1040091	16.32	390	54	146	82.5	44.5	76.2	140	165	70	171
* 44-48	36-40	1040117	25.96	445	55.5	171	95.5	51	79.5	162	191	76.2	198
* 50-54	42-45	1040135	35.83	505	62	194	111	57.2	95.5	187	216	82.5	224
* 56-60	46-48	1040153	47.62	546	70	216	127	66.8	105	210	229	92	248
* 64-67	50-54	1041759	63.50	597	79.5	241	140	74.5	114	235	248	102	270
* 70-73	56-62	1041777	99.79	645	79.5	273	159	79.5	124	259	279	124	286
* 75-80	64-67	1041795	125	689	85.6	292	171	86	133	292	305	133	298
* 82-86	70-73	1041811	142	743	102	311	184	92	146	311	330	146	311
* 88-92	76-80	1041839	181	787	102	330	197	98.5	160	330	356	159	330
* 94-102	-	1041857	246	845	108	362	216	108	184	362	381	178	356

*Cast Alloy Steel

**Diameter of pin must not exceed pin used on companion 416 socket.

⚠ See **WIRELOCK**® warning and application instructions on page 52 of the Crosby Group Inc. general catalogue, April 2006

Crosby Open Swaged Socket S-501



Forged from special bar quality carbon steel, suitable for cold forming.

Swage Socket terminations have an efficiency rating of 100% based on the catalogue strength of wire rope.

Hardness controlled by spheroidize annealing.

Stamp for identification after swaging without concern for fractures (as per directions in National Swaging Brochure).

Swage sockets incorporate a reduced machined area of the shank which is equivalent to the proper "After Swage" dimension. Before swaging, this provides for an obvious visual difference in the shank diameter. After swaging, a uniform shank diameter is created allowing for a QUIC-CHECK® and permanent visual inspection opportunity.

Designed to quickly determine whether the socket has been through the swaging operation and assist in field inspections, it does not eliminate the need to perform standard production inspections which include gauging for the proper "After Swage" dimensions or proof loading.

U.S. Patent 5,152,630 and foreign equivalents.

NOTE: S-501 Swage Sockets are recommended for use with 6 x 19 or 6 x 37, IPS or XIP (EIP), XXIP (EEIP), RRL, FC or IWRC wire rope.

Before using any National Swage fitting with any other type lay, construction or grade of wire rope, it is recommended that the termination be destructive tested and documented to prove the adequacy of the assembly to be manufactured.

In accordance with ANSI B30.9, all slings terminated with swage sockets shall be proof loaded.*

S-501 Open Socket Specification

S-501 stock number	Rope size (mm)*	Weight each (kg)	A	B	C	D	E	F	H	L	M	N	Max. after swage Dim (mm)
1039021	6	0.24	122	12.7	35.1	17.5	6.85	54	17.5	102	9.65	38.1	11.7
1039049	8	0.51	159	19.6	41.1	20.6	8.65	81	20.6	135	11.9	44.5	18
1039067	9-10	0.59	159	19.6	41.1	20.6	10.4	81	20.6	135	11.9	44.5	18
1039085	11-12	0.94	198	24.9	51	25.4	12.2	108	25.4	170	14.2	51	23.1
1039101	13	0.94	198	24.9	51	25.4	14	108	25.4	170	14.2	51	23.1
1039129	14	2.12	241	31.8	60.5	30.2	15.5	135	31.8	207	17.3	57	29.5
1039147	16	2.05	241	31.8	60.5	30.2	17	135	31.8	207	17.3	57	29.5
1039165	18-20	3.62	294	39.4	70	35.1	20.3	162	38.1	254	19.8	70	36.1
1039183	22	5.23	341	43.2	79.5	41.1	23.9	189	44.5	295	23.9	82.5	39.4
1039209	24-26	8.07	393	50.5	93.5	51	26.9	216	51	340	26.9	95.5	45.7
1039227	28	11.5	440	57	103	57	30.2	243	57	381	30.2	108	52
1039245	32	16.1	484	64.5	114	63.5	33.8	270	63.5	419	31	121	58.5
1039263	34-36	19.8	532	71	127	63.5	36.8	297	63.5	461	35.1	133	65
1039281	38-40	26.5	581	78	140	70	40.1	324	76	502	42.9	146	71.5
1039307	44	40.3	676	86	170	89	47.2	378	89	584	53.5	171	77.5
1042767	48-52	66	799	100	203	95.5	53.5	432	102	683	60	203	90.5

*Maximum Proof Load shall not exceed 50% of XXIP rope catalogue breaking strength.

Crosby Closed Swaged Socket S-502

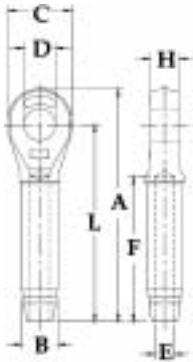
Forged from special bar quality carbon steel, suitable for cold forming.

Swage Socket terminations have an efficiency rating of 100% based on the catalogue strength of wire rope.

Hardness controlled by spheroidize annealing.

Stamp for identification after swaging without concern for fractures (as per directions in National Swaging Brochure).

Swage sockets incorporate a reduced machined area of the shank which is equivalent to the proper "After Swage" dimension. Before swaging, this provides for an obvious visual difference in the shank diameter. After swaging, a uniform shank diameter is created allowing for a QUIC-CHECK® and permanent visual inspection opportunity.



Designed to quickly determine whether the socket has been through the swaging operation and assist in field inspections, it does not eliminate the need to perform standard production inspections which include gauging for the proper "After Swage" dimensions or proof loading.

U.S. Patent 5,152,630 and foreign equivalents.

NOTE: S-502 Swage Sockets are recommended for use with 6 x 19 or 6 x 37, IPS or XIP (EIP), XXIP (EEIP), RRL, FC or IWRC wire rope.

Before using any National Swage fitting with any other type lay, construction or grade of wire rope, it is recommended that the termination be destructive tested and documented to prove the adequacy of the assembly to be manufactured.

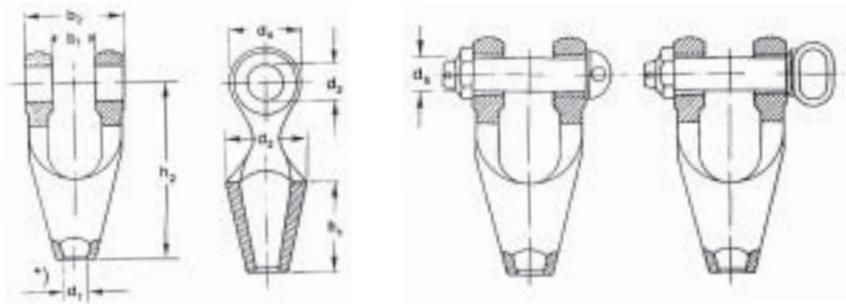
In accordance with ANSI B30.9, all slings terminated with swage sockets shall be proof loaded.*

S-502 stock number	Rope size (mm)*	Weight each (kg)	Before swage dimensions								Max swage Dim. (mm)
			A	B	C	D	E	F	H	L	
1039325	6	0.15	109	12.7	35.1	19.1	6.85	54	12.7	89	11.7
1039343	8	0.34	138	19.6	41.1	22.4	8.65	81	17	114	18
1039361	9-10	0.33	138	19.6	41.1	22.4	10.4	81	17	114	18
1039389	11-12	0.64	176	24.9	51	26.9	12.2	108	21.8	146	23.1
1039405	13	0.64	176	24.9	51	26.9	14	108	21.8	146	23.1
1039423	14	1.32	220	31.8	60.5	31.8	15.5	135	28.7	184	29.5
1039441	16	1.29	220	31.8	60.5	31.8	17	135	28.7	184	29.5
1039469	18-20	2.27	261	39.4	73	36.6	20.3	162	33.3	219	36.1
1039487	22	3.08	303	43.2	79	42.9	23.9	189	38.1	257	39.4
1039502	24-26	4.72	344	50.5	92	52.5	26.9	216	44.5	292	45.7
1039520	28	6.72	382	57	102	58.5	30.2	243	51	324	52
1039548	32	9.78	430	64.5	114	65	33.8	270	57	365	58.5
1039566	34-36	12.9	473	71	127	65	36.8	297	57	400	65
1039584	38-40	17.3	511	78	140	71.5	40.1	324	63.5	432	71.5
1039600	44	23.1	598	86	159	90.5	47.2	378	76	508	77.5
1042589	48-52	40.5	702	100	184	96.5	53.5	432	82.5	584	90.5

*Maximum Proof Load shall not exceed 50% of XXIP rope catalogue breaking strength.



Terminations

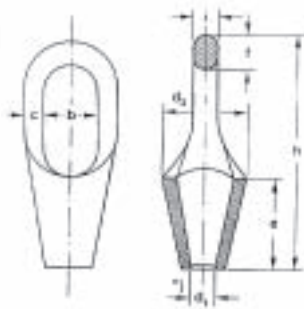


Form B

Form C

Open Socket - to DIN 83313

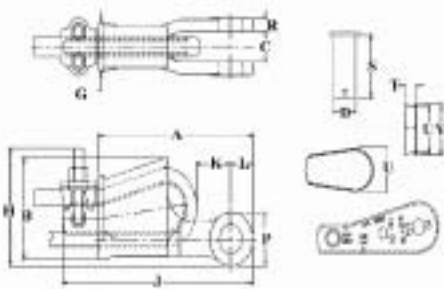
Nominal size	S.W.L	Rope Dia.	b1	b2	d1	d2	d3	d4	d6	h1	h2	Approximate weight per piece	
												Form B	Form C
t	t	mm	mm	mm	mm	mm	mm	mm	mm	mm	mm	kg	kg
1	1	10 - 12	21	47	14	45	17	35	M16	50	105	0.5	0.6
1.6	1.6	12 - 14	27	61	17	55	21	45	M20	60	125	0.9	1.1
2.5	2.5	14 - 18	33	75	20	62	25	55	M24	69	148	1.4	1.8
3	3	16 - 20	38	86	22	69	28	60	M27	78	165	1.8	2.4
4	4	18 - 22	42	96	24	76	31	65	M30	84	180	2.4	3.2
5	5	20 - 24	47	107	27	85	37	75	M36	94	200	3.7	5.0
6	6	22 - 28	53	121	30	94	40	85	M39	106	220	5.0	6.7
8	8	26 - 30	60	136	33	103	46	95	M45	115	242	7.0	9.05
10	10	28 - 34	66	150	36	112	50	110	M48	125	265	10	13
12	12.5	32 - 38	73	167	40	125	54	120	M52	140	296	13	17
16	16	36 - 44	81	185	45	140	62	130	M60	159	332	18	24
20	20	40 - 50	90	206	50	156	70	140	M68	174	365	23	31



Closed Socket - to DIN 83313

Nominal size	S.W.L	Rope Dia.	b	c	d1	d2	e	f	h	i	Approx weight per piece
											kg
t	t	mm	mm	mm	mm	mm	mm	mm	mm	mm	kg
1	1	10-12	30	8	14	45	50	15	130	12	0.4
1.6	1.6	12-14	37	12	17	55	60	19	155	15	0.7
2.5	2.5	14-18	45	14	20	62	69	24	182	19	1.2
3	3.15	16-20	50	16	22	69	78	26	202	21	1.5
4	4	18-22	54	18	24	76	84	30	220	24	2
5	5	20-24	60	20	27	85	94	34	245	27	3.1
6	6.3	22-28	67	23	30	94	106	38	275	30	4.2
8	8	26-30	73	26	33	103	115	42	300	33	5.8
10	10	28-34	80	29	36	112	125	45	330	36	8
12	12.5	32-38	89	32	40	125	140	51	370	41	11
16	16	36-44	100	35	45	140	159	56	415	46	15
20	20	40-50	110	40	50	156	174	62	460	50	20

Crosby Wedge Socket S-421T Terminator™ - to EN13411-6:2003



Basket is cast steel.

Wedge socket terminations have an efficiency rating of 80% based on the catalogue strength of XXIP wire rope.

Crosby products meet or exceed all requirements of ASME B30.26 including identification, ductility, design factor, proof load and temperature requirements. Importantly, Crosby products meet other critical performance requirements including fatigue life, impact properties and material traceability, not addressed by ASME B30.26.

Individually magnetic particle inspected.

Pin diameter and jaw opening allows wedge and socket to be used in conjunction with open swage and spelter sockets.

Secures the tail or "dead end" of the wire rope to the wedge, thus eliminates loss or "Punch out" of the wedge.

Eliminates the need for an extra piece of rope, and is easily installed.

The TERMINATOR™ wedge eliminates the potential breaking off of the tail due to fatigue.

The tail, which is secured by the base of the clip and the wedge, is left undeformed and available for reuse.

Incorporates Crosby's patented QUIC-CHECK® "Go" and "No-Go" feature cast into the wedge. The proper size rope is determined when the following criteria are met:

- 1) The wire rope should pass through the "Go" hole in the wedge.
- 2) The wire rope should NOT pass through the "No-Go" hole in the wedge.

Utilises standard Crosby Red-U-Bolt® wire rope clip.

Standard S-421 wedge socket can be retrofitted with the new style TERMINATOR™ wedge.

Available with Bolt, Nut, and Cotter Pin.

U.S. patent 5,553,360 and foreign equivalents.

Wire rope dia. (mm)	S-421T stock number*	Weight each (kg)	S-421TW stock number wedge only	Wedge only weight each (kg)	Optional G-4082 bolt, nut & cotter G-4082 stock number	Optional G-4082 bolt, nut & cotter G-4082 weight each (kg)
9-10	1035000	1.44	1035555	0.23	1092227	0.17
11-13	1035009	2.79	1035564	0.48	1092236	0.31
14-16	1035018	4.4	1035573	0.81	1092254	0.52
18-19	1035027	6.58	1035582	1.18	1092281	0.86
20-22	1035036	9.75	1035591	1.82	1092307	1.46
24-26	1035045	13.9	1035600	2.44	1092325	2.44
28	1035054	20.5	1035609	3.56	1092343	3.4
30-32	1035063	29.4	1035618	4.8	1092372	4.7

Wire rope dia. (mm)	S-421T stock number*	A	B	C	D	G	H	J†	K†	L	P	R	S	T	U	V
9-10	1035000	145	69.1	20.6	20.6	35.1	77.7	198	47.8	22.4	39.6	11.2	54.1	11.2	31.8	35.1
11-13	1035009	175	88.1	25.4	25.4	41.1	95.5	226	32	26.9	49.3	12.7	65	13.5	44.5	47.8
14-16	1035018	210	109	31.8	30.2	53.8	114	273	50.5	31	57.2	14.2	82.6	17.5	51	55.5
18-19	1035027	251	130	38.1	35.1	62	134	314	61.2	35.6	66.8	16.8	92.2	19.8	59.5	65
20-22	1035036	286	149	44.5	41.4	68.5	156	365	63	42.4	79.5	19.1	109	22.4	68.5	74.5
24-26	1035045	325	161	51	51	74.7	177	414	77.2	51	95.5	22.4	119	26.2	73	83.5
28	1035054	365	176	57	57	84	194	466	65	57	108	25.4	138	27.9	82.6	90.5
30-32	1035063	415	222	66.5	63.5	90.5	239	520	74.7	59.5	114	26.9	156	30.2	117	125

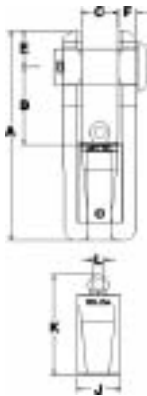
S-421T TERMINATOR™ Assembly includes Socket, Wedge, Pin and Wire Rope Clip.

† Nominal

NOTE: For intermediate wire rope sizes, use next larger size socket.

⚠ See application warning information on page 48 of the Crosby Group Inc. general catalogue, April 2006

Crosby Button Spelter Sockets SB-427



Available in six sizes from 13mm to 38mm.

Button Spelter terminations have a 100% efficiency rating, based on the catalogue strength of the wire rope.

Designed for use with mobile cranes. Can be used to terminate high performance, rotation resistant ropes, and standard 6 strand ropes.

Easy to install assembly utilises Crosby® **WIRELOCK**® socketing compound. Refer to the Crosby Group Inc. general catalogue, April 2006 for **WIRELOCK**® requirements.

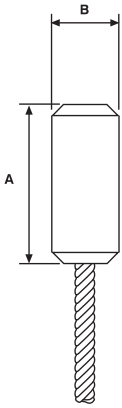
Sockets and buttons are re-usable.

Replacement buttons and sockets are available.

Wire rope size		SB-427 stock number	Weight each (kg)	Socket only stock number	Button only stock number	Dimensions (mm)									
In.	mm					A	B	C	D	E	F	J	K	L	
1/2 - 5/8	13-16	1052005	2.76	1052107	1052309	183	67.6	32.5	30.2	31	15.7	38.1	88.9	6.35	
5/8 - 3/4	16-19	1052014	4.67	1052116	1052318	217	79.2	38.8	35.1	36.6	19.1	44.5	109	9.65	
3/4 - 7/8	19-23	1052023	7.75	1052125	1052327	254	92	45.2	41.1	42.9	22.4	52.3	121	9.65	
7/8 - 1	22-26	1052032	13.24	1052134	1052336	298	111	51.6	51	51	26.2	61.9	143	15.7	
1-1/8 - 1-1/4	28-32	1052041	20.86	1052143	1052345	351	127	64.3	57.2	63.5	28.2	74.7	180	19.1	
1-3/8 - 1-1/2	35-38	1052050	35.38	1052152	1052354	424	152	77	69.9	79.2	32.3	91.9	205	19.1	

⚠ See **WIRELOCK**® warning and application instructions on page 52 of the Crosby Group Inc. general catalogue, April 2006

Bridon Crane Rope End Stop



For use when pocket type housing has been selected for the crane as opposed to the traditional wire rope wedge socket.

Fully load bearing.

Factory fitted, therefore ensuring the integrity of the rope.

Designed for easy assembly and re-reeving operations.

Rope diameter	Overall length		OD max
	A	B	
13	92		33.0
16 - 18	108		39.4
19 - 22	124		45.8
23 - 26	144		52.0