

**WORLD'S
STRONGEST
CHAIN**
www.pewag.com



Winner

innovative strength



Winner

**Lifting gear in G100 quality
for chains and fittings**
**25% higher load capacity &
30% weight saving over Grade 80**



Pewag Grade 100 Chain incorporates the latest development in fittings from Austria. To achieve this under Australian conditions, exhaustive testing of this Pewag Grade 100 range is conducted in NATA testing laboratories to verify the proof test requirements of AS3775.1

pewag – An internationally renowned company from Austria, with production facilities in Graz, Kapfenberg and the Czech Republic can draw from a century of experience in the production of chains and chain components. Today, pewag's success is rooted in advanced, state-of-the-art, high-quality products that are exported to nearly all countries in the world. The main focus of production is on snow chains, tire protection chains and chains for technical applications. The snow chain range covers anti-skid chains for the most diverse vehicles and tyre dimensions. It ranges from chains mounted with the vehicle in standstill position, to automatically closing ice and snow chains and special purpose chains from nickel-manganese and titanium alloy fine-grained stainless steel.

The management's philosophy is a philosophy of absolute quality; the management system that meets the requirements of ISO 9001 and 9002, is continuously improved and tailored to new challenges. Quality and proximity to the customer are of the essence to us. Ongoing research and development of product and production technologies ensure our leading position on the world market. The innovative power of all members of staff and business associates is the source of our successful research and development.

activelifting.com.au

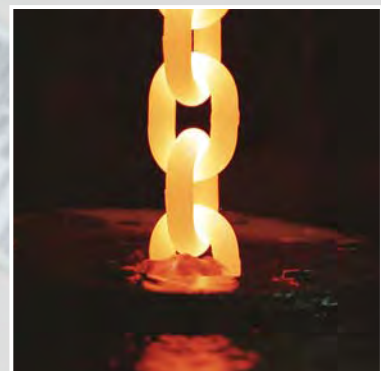
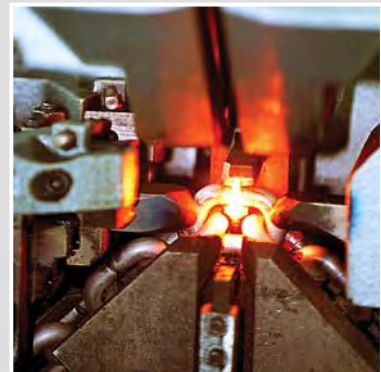
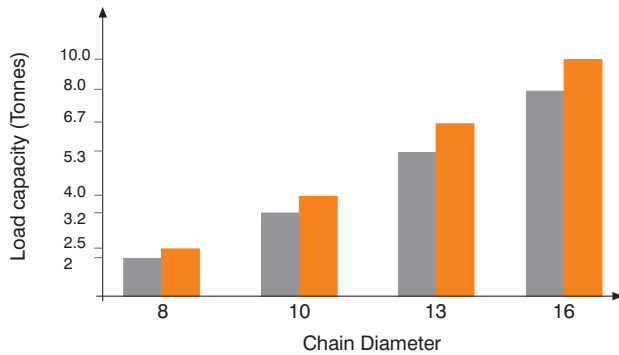


Table of Contents

Winner chain slings – Advantages	5
Winner – Data	6
Winner – Load capacities	7
Winner – Standard sling types	8–9
Winner – Round steel chain	10
Winner – Master links and sets for all assembly systems	11–18
Winner – Accessories for welded and Connex systems and ropes	18–24
Winner – Accessories for the Clevis system	25
Lifting points	26–27
Spare and replacement parts	28–29
Application photos	30
User information	31–34

Chain Slings - Advantages

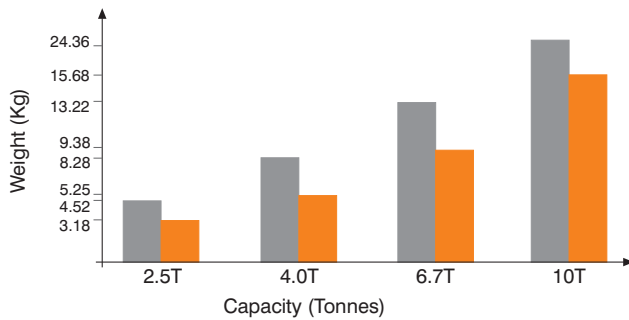
25% higher load capacity than grade 8



Grade 80
Winner Grade 100

Chain Diameter mm	Capacity (Tonnes)		Capacity Advantage
	Grade 80 Ø	Winner Grade 100 chain Ø	%
8	2.0	2.5	25.0
10	3.2	4.0	25.0
13	5.3	6.7	26.4
16	8.0	10.0	25.0

Approx. 30% weight saved resulting in easier handling



Grade 80
Winner Grade 100

Chain Diameter mm		Load capacity	Grade 80 weight	Winner Grade 100 chain weight	% weight reduction
G100	G80				
8	10	2.5	4.52 kg	3.18 kg	29.34
10	13	4.0	8.28 kg	5.25 kg	36.59
13	16	6.7	13.22 kg	9.38 kg	29.05
16	20	10.0	24.36 kg	15.68 kg	35.63

Based on:
Single Leg Chain Sling - 1 metre Chain Length

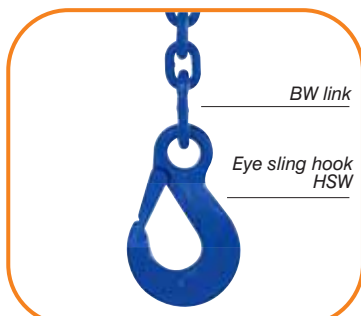
NB: Similar weight savings are applicable to Multi Leg Slings

- Attractive price/performance ratio thanks to the small price differential compared to grade 8
- One dimension smaller than grade 8 slings, for many load ranges – thus providing excellent value
- Extended service life due to higher wear resistance
- Identification made easy – each link is marked. Winner 200 Grade 100: 10
- Traceability of all production data by use of codes on chains and components
- Individual and distinctive tag with precise information to avoid confusion with grade 8
- Simple visual identification of Winner components thanks to high visibility coloured powder coated finish
- Broad range of components in special grade 10 quality with 10 chain dimensions
- Fastest and simplest assembly of slings thanks to VXKW set with patented shortening element
- No risk of faulty shortening with XKW and PW – additional safety compared to shortening clutches
- Easier daily/annual inspection – easier and faster in comparison to grade 8, because fewer components are in use

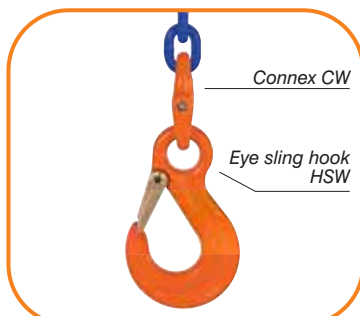


Chain Slings - Advantages

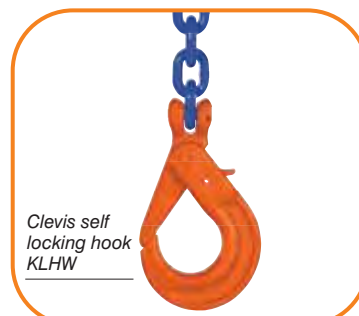
- **First company to offer grab hooks with 100% load capacity** – shortening of the sling chain does not require a reduction in load caused by shear effect of the hook
- **3 assembly systems for slings:** welded, Connex and Clevis system



Welded system



Connex system



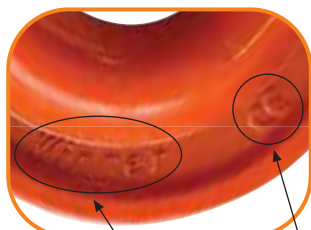
Clevis system

- **Experience** – in 1989 pewag where the first company to manufacture Grade 100 chain slings in the USA
- **Quality-approved European production** by an ISO 9001 certified company
- **Worldwide distribution network** – smooth supply of spare and replacement parts
- **Components meet the requirements of EN 1677 and proof test requirement of AS 3775.1**
- **WIN 200 Grade 100 chain** meets the requirements of **ASTM A973/A973M-01** and of EN 818-2 but with higher load capacity (however admissible operating temperature of 200°C max.) and Machinery Directive

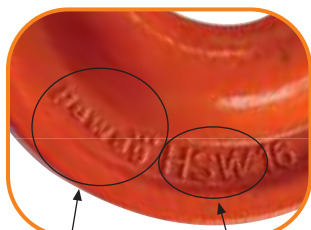
Winner – the environmentally friendly chain

- reduced energy consumption during production
- less material used – protection of raw material reserve
- low weight – less to transport
- less material to be recycled

Product marking:



marking "winner" points to the higher quality grade
CE sign



manufacturer
code of hook



batch code (traceability code)



hall-mark of the german Berufsgenossenschaft "H16"
quality grade



"PWA 100" on the front



quality grade "10" on back of every link



"AUSTRIA"



traceability code: 2 letters on the front, three letters on the back



Winner 200 Grade 100 - Data

- **Chain qualities:** **Winner 200 Grade 100** — meets the requirements of ASTM A973/A973M-01 and of EN 818-2 but with higher load capacity (however admissible operating temperature of 200°C max.) and 98/37/EC Machinery Directive
- **Stress at load capacity limit:** 250 N/mm²
- **Test stress:** 625 N/mm² – corresponds to 2.5 times the load capacity
- **Breaking stress:** 1.000 N/mm² – corresponds to 4 times the load capacity
- **Breaking elongation:** min. 20%
- **Bending according to EN 818-2:** 0,8 x nominal diameter
- **Maximum operating temperature:** **Winner 200 Grade 100** — 200°C max.
- **Quality grade stamps:** **Winner 200 Grade 100** — 100 at a spacing of approx. 300 mm till 16 mm chain (other 0,9 m) and 10 additionally on the back of each link
 - components** — 10 (some items stamped temporary with 8W – old production lots)
- **Surface:** **Winner 200 Grade 100** — shot-blasted and blue painted
 - components** — orange powder coated
 - welded system** — blue painted
- **Working load tag:** All the required data is shown on the working load tag. For simple identification and avoidance of confusion of chain qualities.

Winner 200 Grade 100 —



WARNING

These tags are only allowed to be used for chain slings with assigned chain types Winner 200 Grade 100. Furthermore the chain slings have to be assembled completely with Winner accessories. When using special lifting accessories in Winner chain slings, these tags can only be used if the Grade 100 load capacity doesn't change.

- **Compatibility:** pewag winner chains and components may be combined by a competent person with all components of Grad 80 meeting the requirements of EN818 and EN1677. Furthermore, the pewag winner chains may be combined with all competitors chains and components, being compatible with EN818 and EN1677 qualified items. The function must be checked and released by a competent person. (In consequence, it is not allowed to combine winner chains with competitors items that follow neither the EN818 nor the EN1677 requirements.) Only original pewag spare parts (esp. pins and bolts, safety catches, etc.) may be used for pewag articles. The maximum working load capacity of pewag sling chains is always defined by their weakest part.
- Performance concerning stress crack corrosion is identical to our Grade 80.

Winner 200 Grade 100 - Load capacities

The load capacities listed are maximum values of the various sling types, stated according to the standard (Uniform Load) method of rating similar to AS 3775.

Safety factor		1-leg chain sling			2, 3 & 4 leg chain sling straight			2, 3 & 4 leg chain sling reeved			Endless chain sling			Endless chain sling reeved
4														
	Sling Angle	-	-	-	60	90	120	60	90	120	60	90	120	-
	Load factor	1	1	0,75	1,73	1,41	1	1,3	1,06	0,75	1,3	1,06	0,75	1,5
Code	d	WLL [t]												
WIN 5	5	1.00	1.00	0.75	1.73	1.41	1.00	1.30	1.06	0.75	1.30	1.06	0.75	1.50
WIN 6	6	1.40	1.40	1.00	2.40	2.00	1.40	1.80	1.48	1.00	1.80	1.48	1.00	2.10
WIN 7	7	1.90	1.90	1.43	3.30	2.68	1.90	2.47	2.00	1.43	2.47	2.00	1.43	2.85
WIN 8	8	2.50	2.50	1.90	4.30	3.55	2.50	3.25	2.65	1.90	3.25	2.65	1.90	3.75
WIN 10	10	4.00	4.00	3.00	6.90	5.60	4.00	5.20	4.20	3.00	5.20	4.20	3.00	6.00
WIN 13	13	6.70	6.70	5.00	11.60	9.50	6.70	8.70	7.10	5.00	8.70	7.10	5.00	10.00
WIN 16	16	10.00	10.00	7.50	17.30	14.10	10.00	13.00	10.60	7.50	13.00	10.60	7.50	15.00
WIN 20	20	16.00	16.00	12.00	27.70	22.56	16.00	20.80	17.00	12.00	20.80	17.00	12.00	24.00
WIN 22	22	19.00	19.00	14.20	32.90	26.50	19.00	24.70	20.10	14.20	24.70	20.10	14.20	28.50
WIN 26	26	26.50	26.50	19.80	45.80	37.30	26.50	34.40	28.00	19.80	34.40	28.00	19.80	39.70

If the chain slings are used in more demanding conditions (e.g. high temperature, asymmetric load distribution, edge load, the maximum load capacity values in the table must be reduced by the load factors below. Please also note the user information on this topic.

Temperature	-40° – 200°C			above 200° – 300°C			above 300° to 380°C		
Load factor Winner 200	1			not permissible			not permissible		
Asymmetric load distribution									
Sling Angle	up to 60°	up to 90°	up to 120°	up to 60°	up to 90°	up to 120°	up to 60°	up to 90°	up to 120°
Load factor	0,6	0,7	1	0,6	0,7	1	0,6	0,7	1
Edge load	R = larger than 2x chain Ø			R = larger than chain Ø			R = chain Ø or smaller		
Load factor	1			0,7			0,5		

Winner 200 Grade 100 - Standard sling types

The chain slings shown here are standard sling types. They can – to some degree – also be produced and supplied in other configurations than the ones listed below. If you assemble them yourself, use only original pewag Winner components! For any sling types not shown below, please submit a small sketch indicating the required type. The usual tolerance of length "L" is +2 chain pitches. Unless stated otherwise, any securing links are at the end of the chain leg. The additional "W" in the name code of the individual parts points to the higher quality grade.



I AW-HSW
Connex



I AW-LHW
Connex



I AW-PW
Connex



I AW-E
Connex



I-PW
Connex



I HSW-HSW
Connex



I VXKW-KLHW



II AW-HSW Connex



II AW-LHW Connex



II AW-PW Connex



II AW-E Connex



II VXKW-HSW Connex



II VXKW-KLHW



II AW-HSW-PW Connex



II AW-S-PW Connex



III AW-HSW Connex



III AW-LHW Connex



III AW-PW Connex



III AW-E Connex



IV VXKW-HSW Connex



IV VXKW-KLHW



IV AW-HSW Connex



IV AW-E Connex

The above are examples of some of the many configurations available. Please contact Active Lifting for your specific requirements.

Winner 200 Grade 100 - Standard sling types



SK
up from dimension 8



II AW-S Connex

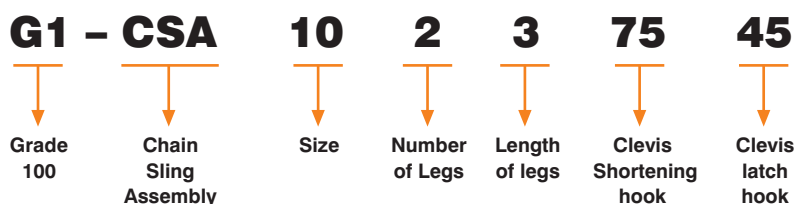


IV AW-S Connex

The above are examples of some of the many configurations available. Please contact Active Lifting for your specific requirements.

Example of order text

Ordering Chart for Grade 100 Chain Slings



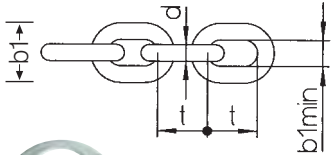
L on the end = oversized Limits

- G1 = Grade 100
- CSA = Chain Sling Assembly
- 5-26 mm = Chain Sling
- 1-4 = Number of Legs
- 0.5> = Length of Legs in metres
- 15 = Eye Sling Hook with Latch
- 25 = Clevis Sling Hook with Latch
- 35 = Eye Shortening Grab Hook
- 45 = Clevis Self Locking Hook
- 55 = Eye Self Locking Hook
- 65 = Eye Foundry Hook
- 75 = Clevis Shortening Grab Hook
- ADD L = Oversized Master Link

Round steel chains

Winner 200

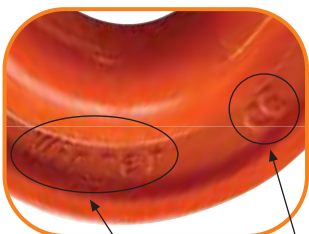
(Chains according to ASTM A973/A973M-01)



Tags for Winner 200 Grade 100 chains

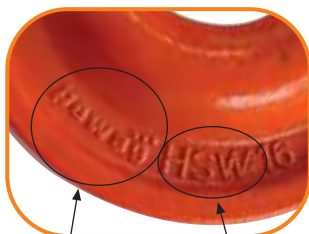
Beaver Code	Nominal diameter d	Standard delivery length [m]	Pitch t	Inside width b1 min.	Outside width b2 max.	Load capacity [kg]	Breaking force [kN]	Weight kg/m
WIN 5 200	5	100/50	16	7,5	18,5	1.000	39,3	0,61
WIN 6 200	6	150/50	18	8,7	21,6	1.400	56,5	0,96
WIN 7 200	7	300/50	21	9,5	25,2	1.900	77	1,2
WIN 8 200	8	250/50	24	10,9	28,8	2.500	101	1,57
WIN 10 200	10	150/50	30	13,5	36,0	4.000	157	2,46
WIN 13 200	13	100/50	39	17,5	46,8	6.700	265	4,18
WIN 16 200	16	100/25	48	21,5	57,6	10.000	402	6,28
WIN 19 200	19	100/25	57	25,6	68,4	14.000	567	8,92
WIN 20 200	20	100	62	25,6	70,5	16.000	628	8,90
WIN 22 200	22	100/25	66	29,5	79,2	19.000	760	11,88
WIN 26 200	26	25	78	35,0	94,1	26.500	1.060	16,18

Product marking



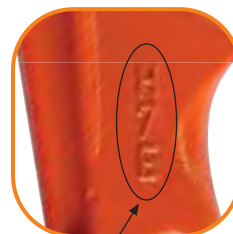
marking "winner" points to the higher quality grade

CE sign

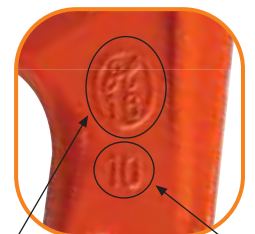


manufacturer

code of hook



batch code (traceability code)



hall-mark of the german Berufsgenossenschaft "H16"

quality grade



"PWA 100" on the front



quality grade "10" on back of every link



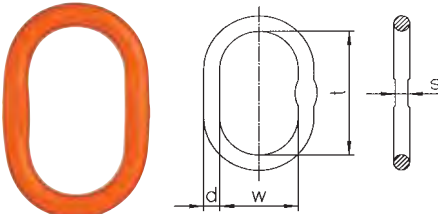
"AUSTRIA"



traceability code: 2 letters on the front, three letters on the back

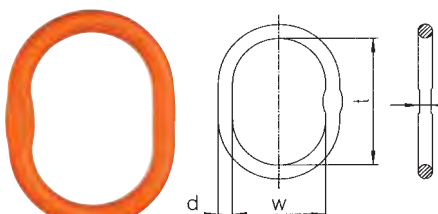


Master links and sets for all assembly systems

AW master link	Code	Load capacity 0-60 ²⁾ kg	Can be used up to single hook acc. to DIN15401 no.	d mm	t mm	w mm	s mm	Weight kg/pc.	Master link for chain Ø in mm	
									1-leg	2-leg
									A I	A II
	AW 10	1.730	1,6	10	80	50	10	0,14	5	5
	AW 13	2.400	2,5	13	110	60	10	0,34	6+7	6
	AW 16	3.500	2,5	16	110	60	14	0,53	8	7
	AW 18	5.000	5	19	135	75	14	0,92	10	8
	AW 22	7.600	6	23	160	90	17	1,6	13	10
	AW 26	11.600	8	27	180	100	20	2,46	16	13
	AW 32	17.300	10	33	200	110	26	4,14	20	16
	AW 36	27.700	16	36	260	140		6,22	22	20
	AW 45	32.900	25	45	340	180		12,82	26	22
	AW 50	45.800	32	50	350	190		16,55	32	26
	AW 56	60.000	32	60	400	200		27,01	-	32

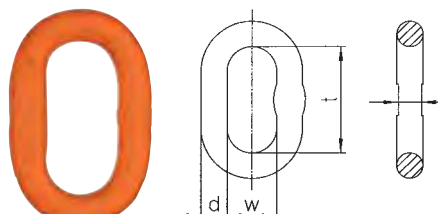
Suitable for 1 & 2 Leg Chain Slings.

²⁾ For load capacity of chain slings please refer to the table on page 7.

MW enlarged master link	Code	Load capacity 0-60 ²⁾ kg	Can be used up to single hook acc. to DIN15401 no.	d mm	t mm	w mm	s mm	Weight kg/pc.	Master link for chain Ø in mm	
									1-leg	2-leg
									A I	A II
	MW 10	1.730	2,5	11	90	65	10	0,22	5	5
	MW 13	2.400	4	14	120	70	10	0,44	6+7	6
	MW 16	3.300	5	16	140	80	13	0,67	8	7
	MW 18	4.300	6	19	160	95	14	1,09	10	8
	MW 22	6.900	10	23	160	110	17	1,69	13	10
	MW 26	11.600	10	27	190	110	20	2,65	16	13
	MW 32	17.300	12	33	230	130	26	4,78	20	16
	MW 36	27.700	20	38	275	150	29	7,48	22	20
	MW 56	45.800	50	56	350	250	-	21,98	32	26

Similar to master link AW, but due to larger inside dimensions suitable for next sized crane hook or special hook.
Suitable for 1 & 2 Leg Chain Slings.

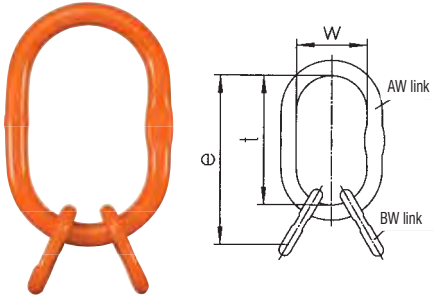
²⁾ For load capacity of chain slings please refer to the table on page 7.

BW transition link	Code	Load capacity 0-60 ²⁾ kg	d mm	t mm	w mm	s mm	Weight kg/pc.	Transition link for chain Ø in mm	
								1- + 2-leg	
								B I/II	
	BW 7	1.000	7	36	16	7	0,03	5	
	BW 8 ¹⁾	1.400	8	36	16	-	0,03	6	
	BW 9	1.900	9	44	20	-	0,07	7	
	BW 10	2.500	10	44	20	-	0,09	8	
	BW 13	4.000	13	54	25	10	0,17	10	
	BW 16	6.700	16,5	70	34	14	0,36	13	
	BW 20	10.000	19,5	85	40	-	0,68	16	
	BW 22	12.500	23	115	50	17	1,16	-	
	BW 23 ¹⁾	16.000	23	115	45	17	1,15	20	
	BW 26	17.300	27	140	65	20	1,92	-	
	BW 27 ¹⁾	19.000	27	140	55	20	1,92	22	
	BW 32	27.700	33	150	70	26	3,16	26	
	BW 36	32.900	36	170	75	-	4,12	-	
	BW 40	40.400	40	170	80	-	5,37	32	
	BW 45	45.800	45	170	80	-	7,15	-	

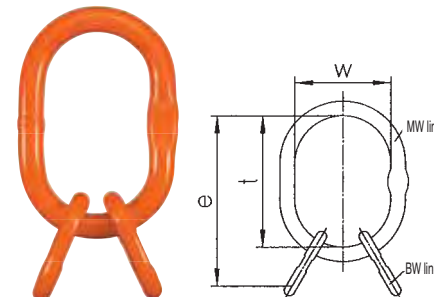
Intermediate link or transition link and securing link.
Only as part.
Master Link Assembly.
For Dimensional Purposes Only.
Not Sold Separately.

Master links and sets for all assembly systems

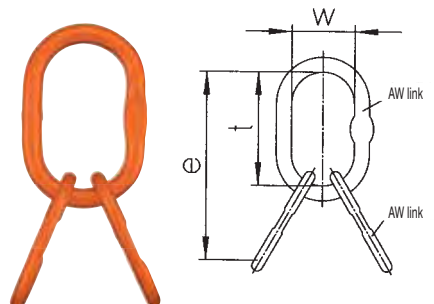
For load capacity of chain slings please refer to the table on page 7.

VW master link assembly		Code	Consisting of	Load capacity 0-60°C ²⁾ kg	Can be used up to single hook acc. to DIN15401 no.	e mm	t mm	w mm	Weight kg/pc.
	VW 5	AW 13 + 2 BW 10	2.300	2,5	154	110	60	0,52	
	VW 6	AW 18 + 2 BW 13	4.200	5	189	135	75	1,26	
	VW 7/8	AW 22 + 2 BW 16	7.600	6	230	160	90	2,32	
	VW 10	AW 26 + 2 BW 20	9.600	8	265	180	100	3,68	
	VW 13	AW 32 + 2 BW 22	14.000	10	315	200	110	6,46	
	VW 16	AW 36 + 2 BW 26	21.200	16	400	260	140	10,06	
	VW 20	AW 50 + 2 BW 32	34.100	32	500	350	190	22,87	
	VW 22	AW 50 + 2 BW 36	40.000	32	520	350	190	24,79	
	VW 26	AW 56 + 2 BW 45	56.000	32	570	400	200	41,31	

For assembling 3- and 4-leg chains with Chain Connecting links, and for rope slings.

VMW enlarged master link assembly		Code	Consisting of	Load capacity 0-60°C ²⁾ kg	Can be used up to single hook acc. to DIN15401 no.	e mm	t mm	w mm	Weight kg/pc.
	VMW 6	MW 18 + 2 BW 13	4.200	6	214	160	95	1,43	
	VMW 7/8	MW 22 + 2 BW 16	6.600	10	230	160	110	2,41	
	VMW 10	MW 26 + 2 BW 20	10.100	10	275	190	110	4,01	
	VMW 13	MW 32 + 2 BW 22	15.700	12	345	230	130	6,90	
	VMW 16	MW 36 + 2 BW 26	21.200	25	415	275	150	11,12	
	VMW 20	MW 56 + 2 BW 32	34.100	50	500	350	250	28,08	
	VMW 22	MW 56 + 2 BW 36	40.000	50	520	350	250	30,62	

Similar to VW 4-leg set, but also suitable for larger crane hooks and special hooks.

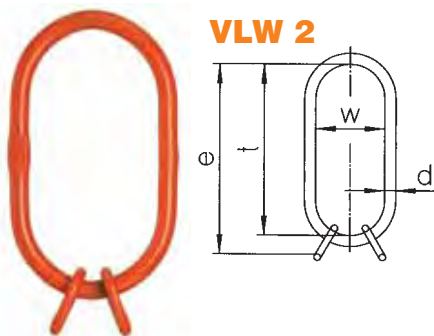
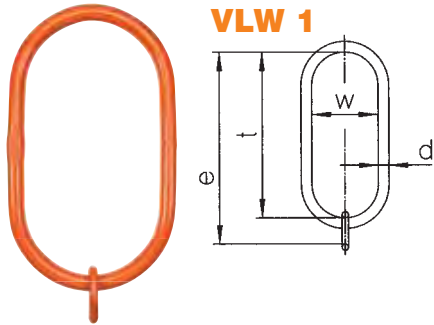
VAW special master link assembly		Code	Consisting of	Load capacity 0-60°C ²⁾ kg	Can be used up to single hook acc. to DIN15401 no.	e mm	t mm	w mm	Weight kg/pc.
	VAW 6	AW 18 + 2 AW 13	3.000	5	245	135	75	1,60	
	VAW 8	AW 22 + 2 AW 16	5.300	6	270	160	90	2,66	
	VAW 10	AW 32 + 2 AW 22	10.100	10	360	200	110	7,34	
	VAW 13	AW 36 + 2 AW 26	14.300	16	440	260	140	11,14	
	VAW 16	AW 45 + 2 AW 32	22.200	25	540	340	180	21,10	
	VAW 20	AW 50 + 2 AW 36	32.900	32	610	350	190	35,31	
	VAW 22	AW 50 + 2 AW 45	40.400	32	690	350	190	42,19	
	VAW 26	AW 56 + 2 AW 50	58.000	32	750	400	200	60,11	

For 4-leg slings, when shortening hooks are to be assembled separately, and for wire rope slings with thimble eyes.

Master links and sets for all assembly systems

VLW oversize master link assembly

For hook no. 25 DIN 15401.
For assembling 1- and multi-leg slings with Connex CW.
Example of multi-leg sling: VLW 2-10 + 4-10 can be used for 10 mm 2-leg slings and for 10 mm 4-leg slings.



Code	Consisting of	Load capacity kg	Can be used up to single hook acc. to DIN15401 no.	e mm	d mm	t mm	w mm	Weight kg/pc.
VLW 1-6/7/8	LW22 + BW13	2.500	25	394	22	340	180	3,4
VLW 1-10	LW27+ BW16	4.000	25	410	27	340	180	4,8
VLW 1-13	LW27	6.700	25	340	27	340	180	4,4
VLW 1-16	LW32	10.000	25	340	33	340	180	6,7
VLW 1-20/22	LW40	19.000	25	340	40	340	190	10,0

Code	Consisting of	Load capacity 0-60° kg	Can be used up to single hook acc. to DIN15401 no.	e mm	d mm	t mm	w mm	Weight kg/pc.
VLW 2-6/7+4-6/7	LW22 + 2BW13	3.550	25	394	22	340	180	3,5
VLW 2-8+4-8	LW27+2BW16	5.600	25	410	27	340	180	5,1
VLW 2-10+4-10	LW32+2BW20	9.500	25	425	33	340	180	8
VLW 2-13+4-13	LW40+2BW22	14.000	25	455	40	340	180	12,3
VLW 2-16+4-16	LW40+2BW26	21.200	25	480	40	340	180	13,8

Comparison of the various master rings of our product range:



* Safety catch not shown for illustration purposes only.

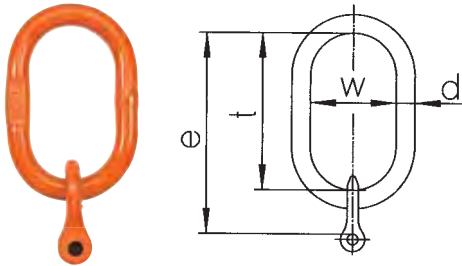
Master links and sets for all assembly systems

KAGW clevis master sets

Master sets for single- and multi-leg chains with welded-in captive couplings.

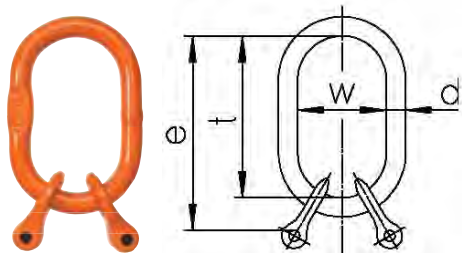
KAGW 1

for 1-leg slings



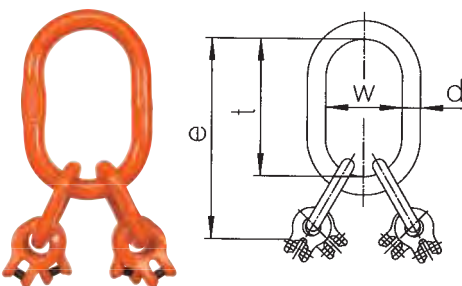
KAGW 2

for 2-leg slings



KAGW 4

for 3- and 4-leg slings



Code	Load capacity kg	For chain Ø	Can be used up to single hook acc. to DIN15401 no.	e mm	d mm	t mm	w mm	Weight kg/pc.
KAGW 1-6	1.400	6	2,5	141	13	110	60	0,42
KAGW 1-7	1.900	7	2,5	152,5	13	110	60	0,54
KAGW 1-8	2.500	8	2,5	152,5	16	110	60	0,73
KAGW 1-10	4.000	10	5	186	18	135	75	1,44
KAGW 1-13	6.700	13	6	223	23	160	90	2,3
KAGW 1-16	10.000	16	8	254	27	180	100	3,63
KAGW 1-20	16.000	20	10	290	33	200	110	6,2
KAGW 1-22	19.000	22	16	356,5	36	260	140	8,9
Code	Load capacity 0-60° kg	For chain Ø	Can be used up to single hook acc. to DIN15401 no.	e mm	d mm	t mm	w mm	Weight kg/pc.
KAGW 2-6	2400	6	2,5	141	13	110	60	0,5
KAGW 2-7	3300	7	2,5	152,5	16	110	60	0,93
KAGW 2-8	4300	8	5	177,5	18	135	75	1,26
KAGW 2-10	6900	10	6	211	23	160	90	2,66
KAGW 2-13	11600	13	8	243	27	180	100	3,86
KAGW 2-16	17300	16	10	274	33	200	110	6,48
KAGW 2-20	27700	20	16	350	36	260	140	10,1
KAGW 2-22	32900	22	25	436,5	45	340	180	17,88
Code	Load capacity 0-60° kg	For chain Ø	Can be used up to single hook acc. to DIN15401 no.	e mm	d mm	t mm	w mm	Weight kg/pc.
KAGW 4-6	2400	6	5	220	18	135	75	1,52
KAGW 4-7	3300	7	6	272,5	23	160	90	3,12
KAGW 4-8	4300	8	6	272,5	23	160	90	3,12
KAGW 4-10	6900	10	8	316	27	180	100	6,14
KAGW 4-13	11600	13	10	378	33	200	110	9,26
KAGW 4-16	17300	16	16	474	36	260	140	14,74
KAGW 4-20	27700	20	32	590	50	350	190	30,47
KAGW 4-22	32900	22	32	617	50	350	190	34,91

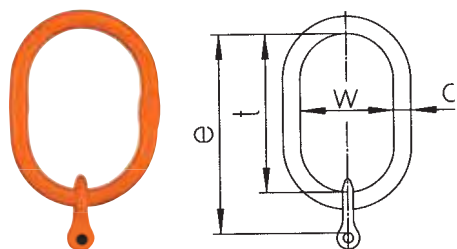
Master links and sets for all assembly systems

KMGW enlarged clevis master sets

Similar to KAGW Clevis master set, but suitable for larger crane hooks and special hooks.

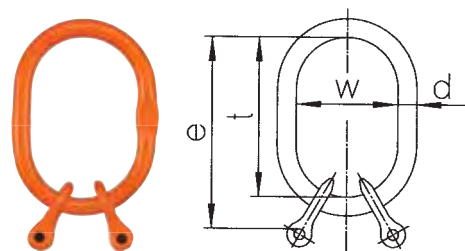
KMGW 1

for 1-leg slings without shortening Grab Hooks



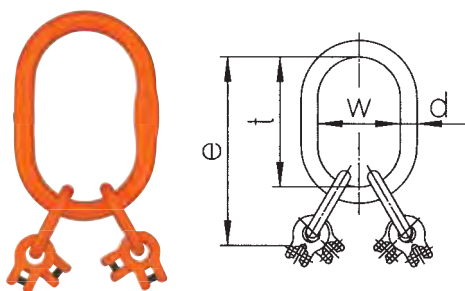
KMGW 2

for 2-leg slings without shortening Grab Hooks



KMGW 4

for 3- and 4-leg slings without shortening Grab Hooks



Code	Load capacity kg	For chain Ø	Can be used up to single hook acc. to DIN15401 no.	e mm	d mm	t mm	w mm	Weight kg/pc.
KMGW 1-6	1.400	6	4	151	14	120	70	0,52
KMGW 1-8	2.500	8	5	182,5	16	140	80	0,87
KMGW 1-10	4.000	10	6	211	19	160	95	1,67
KMGW 1-13	6.700	13	10	223	23	160	110	2,39
KMGW 1-16	10.000	16	10	264	27	190	110	3,82

Code	Load capacity 0-60° kg	For chain Ø	Can be used up to single hook acc. to DIN15401 no.	e mm	d mm	t mm	w mm	Weight kg/pc.
KMGW 2-6	2400	6	4	151	14	120	70	0,6
KMGW 2-8	4300	8	6	202,5	19	160	95	1,49
KMGW 2-10	6900	10	10	211	23	160	110	2,85
KMGW 2-13	11600	13	10	253	27	190	110	4,05
KMGW 2-16	17300	16	12	304	33	230	130	7,12

Code	Load capacity 0-60° kg	For chain Ø	Can be used up to single hook acc. to DIN15401 no.	e mm	d mm	t mm	w mm	Weight kg/pc.
KMGW 4-6	2400	6	6	245	19	160	95	1,75
KMGW 4-8	4300	8	10	272,5	23	160	110	3,21
KMGW 4-10	6900	10	10	326	27	190	110	6,33
KMGW 4-13	11600	13	12	408	33	230	130	9,9
KMGW 4-16	17300	16	25	489	38	275	150	16,0

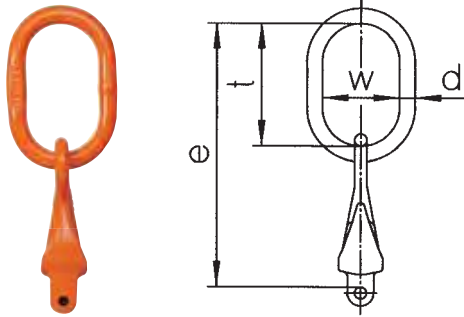
Master links and sets for all assembly systems

VXKW clevis master sets

Master sets for single and multiple-leg chains with welded-in XKW shortening element.

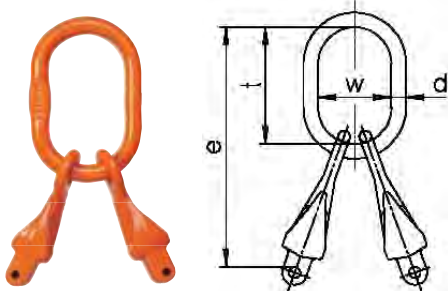
VXKW 1

for 1-leg slings with shortening hook type XKW



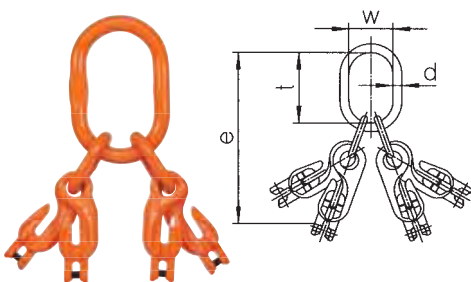
VXKW 2

for 2-leg slings with shortening hook type XKW



VXKW 4

for 3- and 4-leg slings with shortening hook type XKW



Code	Load capacity kg	For chain Ø	Can be used up to single hook acc. to DIN15401 no.	e mm	d mm	t mm	w mm	Weight kg/pc.
VXKW 1-5	1.000	5	1,6	164	10	80	50	0,44
VXKW 1-6	1.400	6	2,5	194	13	110	60	0,64
VXKW 1-7	1.900	7	2,5	232	13	110	60	0,96
VXKW 1-8	2.500	8	2,5	232	16	110	60	1,16
VXKW 1-10	4.000	10	5	294	18	135	75	2,11
VXKW 1-13	6.700	13	6	363	23	160	90	4,30
VXKW 1-16	10.000	16	8	413	27	180	100	7,26

Code	Load capacity 0-60° kg	For chain Ø	Can be used up to single hook acc. to DIN15401 no.	e mm	d mm	t mm	w mm	Weight kg/pc.
VXKW 2-5	1730	5	1,6	164,3	10	80	50	0,74
VXKW 2-6	2400	6	2,5	194	13	110	60	0,94
VXKW 2-7	3300	7	2,5	232	16	110	60	1,77
VXKW 2-8	4300	8	5	257	18	135	75	2,12
VXKW 2-10	6900	10	6	319	23	160	90	4,1
VXKW 2-13	11600	13	8	383	27	180	100	7,86
VXKW 2-16	17300	16	10	433	33	200	110	13,74

Code	Load capacity 0-60° kg	For chain Ø	Can be used up to single hook acc. to DIN15401 no.	e mm	d mm	t mm	w mm	Weight kg/pc.
VXKW 4-5	1730	5	2,5	238	13	110	60	1,72
VXKW 4-6	2400	6	5	273	18	135	75	2,4
VXKW 4-7	3300	7	6	352	23	160	90	4,84
VXKW 4-8	4300	8	6	352	23	160	90	4,84
VXKW 4-10	6900	10	8	424	27	180	100	8,82
VXKW 4-13	11600	13	10	518	33	200	110	17,26
VXKW 4-16	17300	16	16	633	36	260	140	29,26

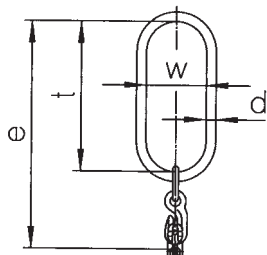
Master links and sets for all assembly systems

LXKW oversize clevis master sets

For hook no. 25 DIN 15401.
Particularly for large crane hooks (mobile crans).
Very useful, because each leg can be shortened.

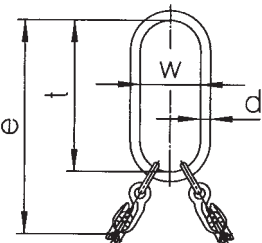
LXKW 1

for 1-leg slings with shortening hook type XKW



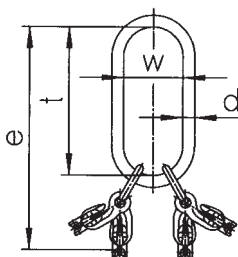
LXKW 2

for 2-leg slings with shortening hook type XKW



LXKW 4

for 3- and 4-leg slings with shortening hook type XKW



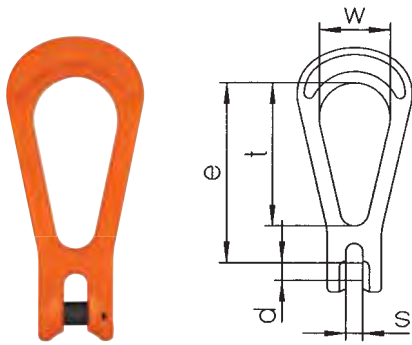
Code	Load capacity kg	Can be used up to single hook acc. to DIN15401 no.	e mm	d mm	t mm	w mm	Weight kg/pc.
LXKW 1-6	1.400	25	478	23	340	180	3,7
LXKW 1-8	2.500	25	516	23	340	180	4
LXKW 1-10	4.000	25	569	27	340	180	6
LXKW 1-13	6.700	25	629	27	340	180	7,8
LXKW 1-16	10.000	25	688	33	340	180	12,7

Code	Load capacity 0-60° kg	Can be used up to single hook acc. to DIN15401 no.	e mm	d mm	t mm	w mm	Weight kg/pc.
LXKW 2-6	2.000	25	478	23	340	180	4,14
LXKW 2-8	3.550	25	516	23	340	180	4,8
LXKW 2-10	5.600	25	569	27	340	180	7,6
LXKW 2-13	9.500	25	629	33	340	180	13,5
LXKW 2-16	14.100	25	688	40	340	180	21,9

Code	Load capacity 0-60° kg	Can be used up to single hook acc. to DIN15401 no.	e mm	d mm	t mm	w mm	Weight kg/pc.
LXKW 4-6	2400	25	478	23	340	180	4,7
LXKW 4-8	4300	25	532	27	340	180	7,6
LXKW 4-10	6900	25	584	33	340	180	13,1
LXKW 4-13	11600	25	659	40	340	180	23,1
LXKW 4-16	17300	25	713	40	340	180	33,1

Master links and sets for all assembly systems

KOW clevis reeving link

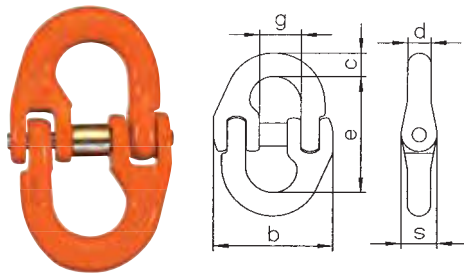


No danger of confusing this master link with any other master link. Can also be used as an end link.

Code	Load capacity kg	e mm	t mm	w mm	d mm	s mm	Weight kg/pc.
KOW 7	1.900	92	70	34	9	9	0,28
KOW 8	2.500	91	70	34	10	9	0,30
KOW 10	4.000	128	102	50	12,5	12	0,70
KOW 13	6.700	169	136	66	16	15	1,40
KOW 16	10.000	214	172	83	20	18	2,74

Components

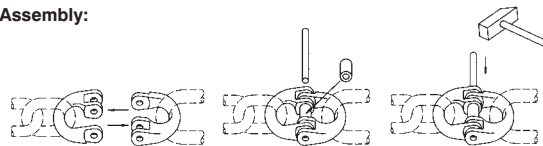
CW connex connecting link (chain and component connector)



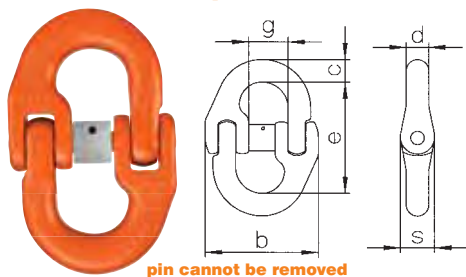
Load pin and collar CBHW are also separately available.
 Connecting link for:
 Master link – chain
 Chain – chain
 Hook – chain

Code	Load capacity kg	e mm	c mm	s mm	d mm	b mm	g mm	Weight kg/pc.
CW 5	1.000	36	7	9	7	35	13	0,05
CW 6	1.400	44	8	11	8	39	14	0,06
CW 7	1.900	51	10	13	9	47	17	0,12
CW 8	2.500	62	12	15	10	53	18	0,18
CW 10	4.000	72	13	18	13	63	23	0,33
CW 13	6.700	88	19	22	17	79	28	0,70
CW 16	10.000	103	21	29	21	106	33	1,40
CW 20	16.000	115	30	35	25	118	42	2,14
CW 22	19.000	161	34	39	25	148	51	4,15
CW 26	26.500	190	40	46	30	175	60	6,70

Assembly:



CLW connex tamper proof connecting link (chain and component connector)



pin cannot be removed
 For applications where the pin must not be removed or must be secured by positive locking.

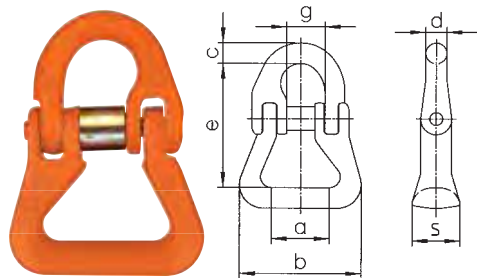
Code	Load capacity kg	e mm	c mm	s mm	d mm	b mm	g mm	Weight kg/pc.
CLW 7	1.900	51	10	13	9	47	17	0,12
CLW 10	4.000	72	13	18	13	63	23	0,33
CLW 13	6.700	88	19	22	17	79	28	0,70
CLW 16	10.000	103	21	29	21	106	33	1,14

Assembly:



Components for chain slings

CARW round sling connecting link

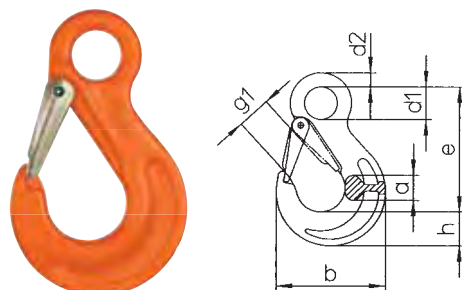


Link for webbing slings mounted in one Connex half. Reduced risk of damage thanks to wide surface. Supplied complete with Connex half, load pin and collar.

Code	Load capacity kg	a mm	e mm	c mm	d mm	b mm	s mm	g mm	Weight kg/pc.
CARW 8	2.500	29	66	12	10	65	18	18	0,30
CARW 10	4.000	40	81	13	13	82	21	23	0,50
CARW 13	6.700	50	104	19	17	100	28	28	1,10
CARW 16	10.000	47	113	21	21	110	40	33	2,00
CARW 22	19.000	109	178	29	27	215	59	48	6,50



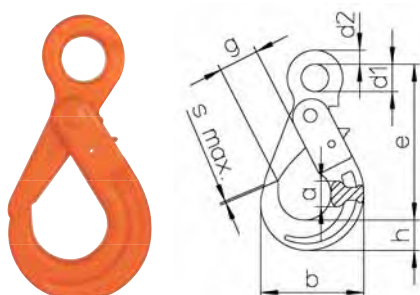
HSW eye sling hook (safety sling hook)



For general lifting applications. All hooks with forged safety catch.

Code	Load capacity kg	e mm	h mm	a mm	d1 mm	d2 mm	g1 mm	b mm	Weight kg/pc.
HSW 5/6	1.400	85	21	17	20	10	19	68	0,30
HSW 7/8	2.500	106	27	19	25	11	26	88	0,50
HSW 10	4.000	131	33	26	34	16	31	109	1,10
HSW 13	6.700	164	44	33	43	19	39	134	2,20
HSW 16	10.000	183	50	40	50	25	45	155	3,50
HSW 20	16.000	205	55	48	55	27	53	178	5,80
HSW 22	19.000	225	62	50	60	29	62	196	8,00
HSW 26	26.500	259	75	60	70	37	73	235	12,80

LHW eye self locking hook

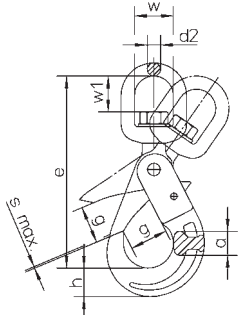


Large eye, therefore suitable for ropes and webbing slings. Automatically closes and locks under load, and requires the load to be grounded before load can be released. Not for welded system!

Code	Load capacity kg	e mm	h mm	a mm	b mm	d1 mm	d2 mm	g mm	s max. mm	Weight kg/pc.
LHW 5/6	1.400	110	20	17	71	21	11	28	1	0,50
LHW 7/8	2.500	136	26	20	88	25	12	34	1	0,90
LHW 10	4.000	169	30	29	107	35	15	45	1	1,50
LHW 13	6.700	205	40	35	138	40	20	52	2	2,70
LHW 16	10.000	251	50	41	168	50	27	60	2	5,70
LHW 20	16.000	290	62	50	194	60	30	70	2	9,80
LHW 22	19.000	322	65	52	211	70	32	81	2	12,40

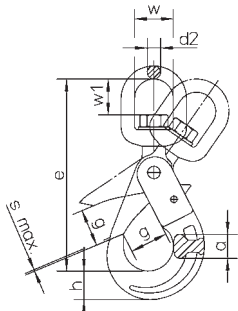
Components for Chain Connectors

WLHW swivel self locking hook



Standard type cannot be swivelled when loaded.
Not for welded system!

WLHBW swivel self locking hook

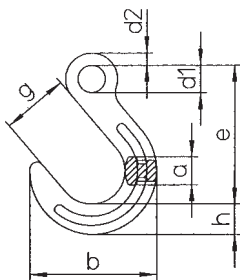


Swivel hook with bearing to rotate when loaded.
Not for welded system!

Code	Load capacity kg	e mm	h mm	a mm	w mm	w1 mm	d2 mm	g mm	s max. mm	Weight kg/pc.
WLHW 6	1.400	160	20	17	35	35	13	28	1	0,60
WLHW 7/8	2.500	181	26	20	35	35	13	34	1	1,10
WLHW 10	4.000	218	30	29	42	40	16	45	1	2,00
WLHW 13	6.700	269	40	35	49	47	20	52	2	4,00
WLHW 16	10.000	319	50	41	60	60	24	60	2	6,80

Code	Load capacity kg	e mm	h mm	a mm	w mm	w1 mm	d2 mm	g mm	s max. mm	Weight kg/pc.
WLHBW 6	1.400	160	20	17	35	35	13	28	1	0,60
WLHBW 7/8	2.500	181	26	20	35	35	13	34	1	1,10
WLHBW 10	4.000	218	30	29	42	40	16	45	1	2,00
WLHBW 13	6.700	269	40	35	49	47	20	52	2	4,00
WLHBW 16	10.000	319	50	41	60	60	24	60	2	6,80

FW foundry hook



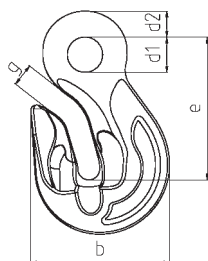
For applications where jaw size "g" of the HSW hook is inadequate, mainly in foundries. Before using the hook, check whether hooks without safety catch are allowed to be used for the application.

Code	Load capacity kg	e mm	h mm	a mm	d1 mm	d2 mm	g mm	b mm	Weight kg/pc.
FW 7/8	2.500	131	29	25	24	11	64	118	0,92
FW 10	4.000	158	35	32	31	14	76	143	1,77
FW 13	6.700	190	42	40	39	17	89	170	2,82
FW 16	10.000	224	50	46	47	22	102	200	5,03
FW 20	16.000	260	61	54	56	28	114	231	7,6

¹⁾ can't be mounted with Unilock U

Components for Chain Connectors

PW eye shortening grab hook



Used for the shortening of chain sling legs. It is the first grab hook in grade 100 on the market. Due to its unique design there is no deration in the load capacity. This is due to the 4 fold feature of the hooks supporting cradle design.

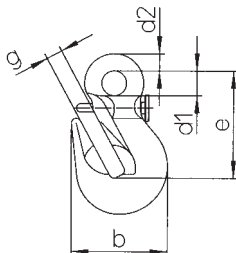
Code	Load capacity kg	e mm	b mm	d1 mm	d2 mm	g mm	Weight kg/pc.
PW 5/6	1.400	51	48	12	9	8	0,18
PW 7/8	2.500	71	58	20	12	11	0,40
PW 10	4.000	88	76	22	15	13	0,90
PW 13	6.700	113	101	26	18	17	1,80
PW 16	10.000	129	118	32	23	19	3,60
PW 20	16.000	151	150	36	27	25	6,15
PW 22	19.000	170	165	42	31	27	8,30
PW 26	26.500	201	195	50	37	32	13,80



CAUTION

The design of the eye shortening grab hooks allow for a quick visual check that the chain is seated in the hook's mouth correctly. The design of the hook means that the supported chain link no longer contacts the bearing surface of the hook, due to the chain being supported by the side faces of the hook. Meaning no deration of the rated capacity.

PSW eye safety shortening grab hook with safety device

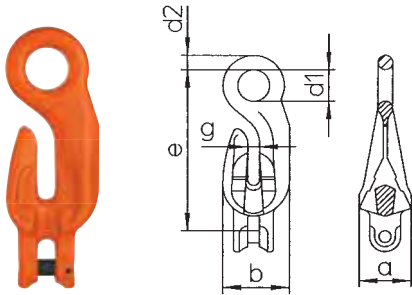


The first grade 100 eye shortening safety grab hook which prevents the accidental release of the chain whilst still providing no deration in capacity. This feature is useful when the chains have been loaded fully as there is no possibility of the chain becoming dislodged from the grab hook. Meaning once you have adjusted the legs there is no need to adjust them again.

Code	Load capacity kg	e mm	b mm	d1 mm	d2 mm	g mm	Weight kg/pc.
PSW 7/8	2.500	71	58	20	12	11	0,40
PSW 10	4.000	88	76	22	15	13	0,90
PSW 13	6.700	113	101	26	18	17	1,80
PSW 16	10.000	129	118	32	23	19	3,60

Components for Chain Connectors

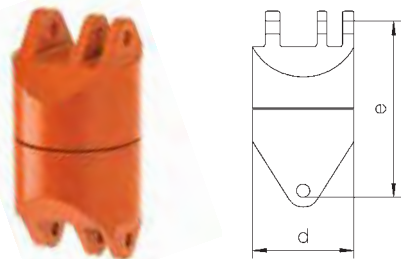
XKW eye shortening grab hook with clevis attachment



Can be mounted in any chain leg thanks to Clevis part.

Code	Load capacity kg	e mm	b mm	a mm	d1 mm	d2 mm	g mm	Weight kg/pc.
XKW 5/6	1.400	84	37	29	18	9	8	0,30
XKW 7	1.900	122	54	39	24	12	11	0,62
XKW 8	2.500	122	54	39	24	12	11	0,63
XKW 10	4.000	159	70	50	31	14	13	1,25
XKW 13	6.700	203	92	64	37	18	15	2,70
XKW 16	10.000	234	102	80	48	24	20	4,80

DFW Swivel

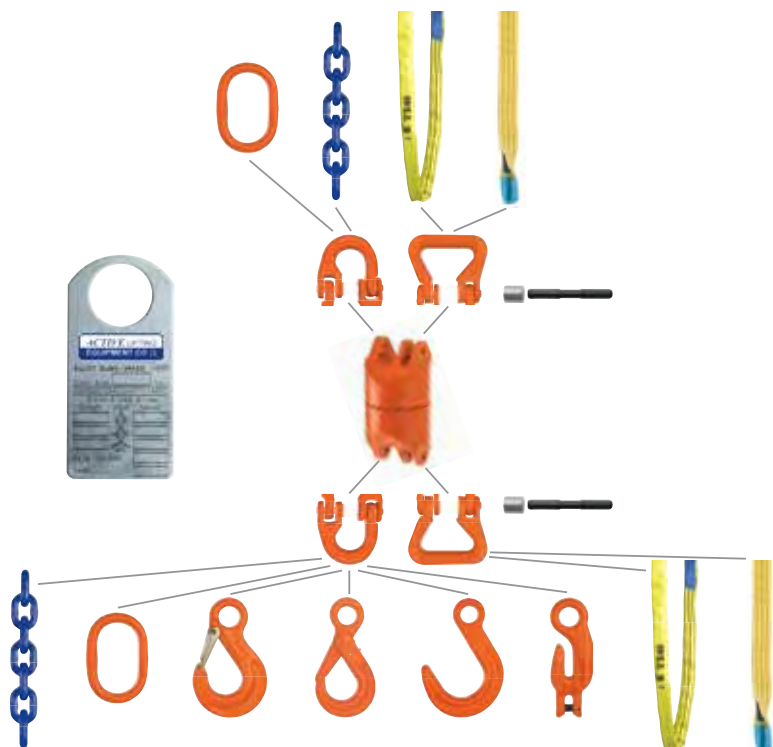


Can be rotated when loaded because of roller bearing. Can be mounted with accessories for the Connex System with CW or CARW. Admissible operating temperature 100°C.
Scope of delivery: 1 swivel, 1 bolt and 1 bush with adaptor sleeve. For mounting the swivel, an additional connecting link Connex CW or a round sling connecting link CARW is needed.

Code	Load capacity kg	e mm	d mm	Weight kg/pc.
DFW 7	1.900	91	53	1,12
DFW 8	2.500	91	53	1,12
DFW 10	4.000	111	63	2,00

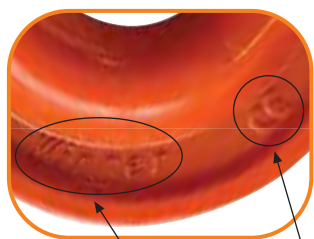
Assembly options:

Our wide product range means that many combinations are possible.

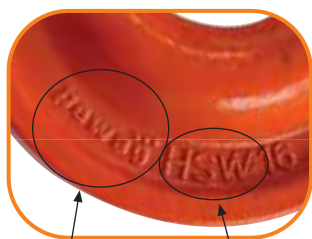


Accessories for welded or Connex systems and chains

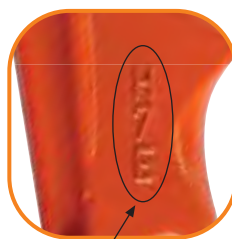
Product marking



marking "winner" points to the higher quality grade
CE sign



manufacturer
code of hook



batch code (traceability code)



hall-mark of the german Berufsgenossenschaft "H16"
quality grade



"PWA 100" on the front



quality grade "10" on back of every link



"AUSTRIA"

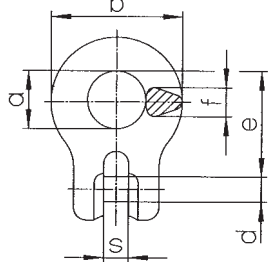


traceability code: 2 letters on the front, three letters on the back



Accessories for the Clevis system

KRW coupling ring

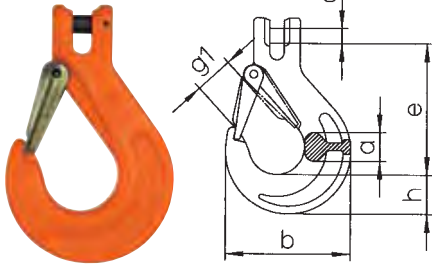


Connecting part for Clevis master sets, and as a chain-connecting component in specific designs. For Dimensional Purposes only Not Sold Separately.

Code	Load capacity kg	e mm	s mm	a mm	b mm	f mm	d mm	Weight kg/pc.
KRW 5/6	1.400	31	7	18	38	8	7	0,08
KRW 7	1.900	43	10	24	54	11	9	0,20
KRW 8	2.500	43	10	24	54	11	10	0,20
KRW 10	4.000	51	12	28	63	14	13	0,58
KRW 13	6.700	63	15	33	76	17	16	0,70
KRW 16	10.000	74	18	40	88	20	20	1,17
KRW 20	16.000	94	23	50	114	24	24	2,00
KRW 22	19.000	102	25	50	122	27	27	2,60

Components for the Clevis system

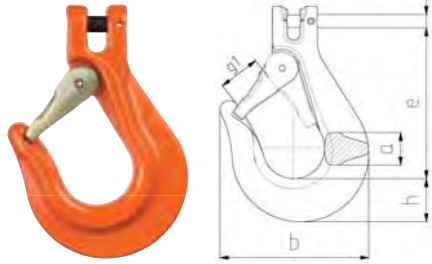
KHSW clevis sling hook (clevis safety sling hook)



General purpose hook, can be used without transition link and without connecting link. With forged safety catch.

Code	Load capacity kg	e mm	h mm	a mm	d mm	g1 mm	b mm	Weight kg/pc.
KHSW 5/6	1.400	69	20	15	7	19	66	0,20
KHSW 7	1.900	95	28	19	9	26	90	0,60
KHSW 8	2.500	95	28	19	10	26	90	0,60
KHSW 10	4.000	109	35	25	13	31	108	1,10
KHSW 13	6.700	136	41	34	16	39	131	2,00
KHSW 16	10.000	155	49	37	20	45	153	3,48
KHSW 20	16.000	184	53	51	24	53	177	5,00
KHSW 22	19.000	214	62	52	27	62	196	9,00

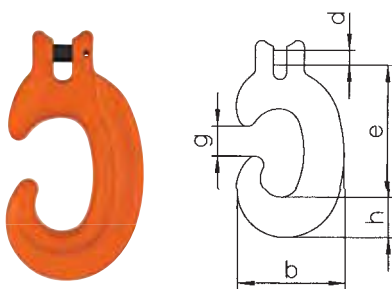
GKHSW extra wide bowl clevis sling hook (clevis safety sling hook)



Alternative for the KHSW with wider throat opening.

Code	Load capacity kg	e mm	h mm	a mm	d mm	g1 mm	b mm	Weight kg/pc.
GKHSW 8	2.500	116	33	25	10	32	113	1,10
GKHSW 10	4.000	126	40	30	13	35	132	1,70

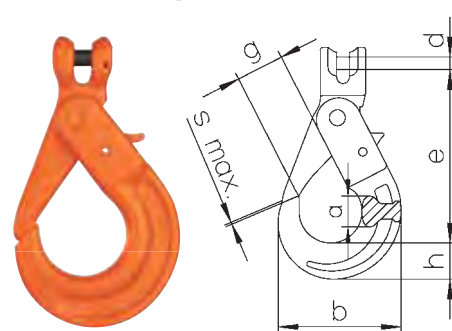
KCHW clevis C-hook



Suitable for simple and fast hooking and removal. Only for applications without safety catch requirement.

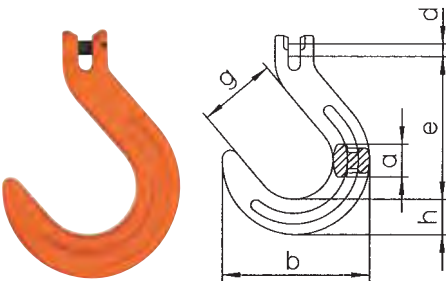
Code	Load capacity kg	e mm	h mm	d mm	b mm	g mm	Weight kg/pc.
KCHW 7	1.900	91	28	9	74	20	0,50
KCHW 8	2.500	90	28	10	74	20	0,50
KCHW 10	4.000	129	39	13	107	28	1,40
KCHW 13	6.700	166	51	16	137	41	3,00
KCHW 16	10.000	205	60	20	166	45	5,30

KLHW clevis self locking hook



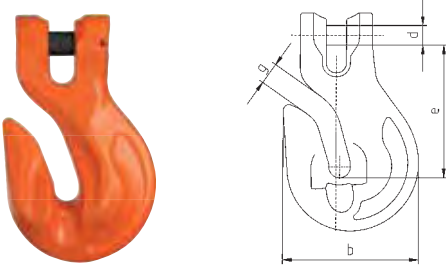
Closes and locks automatically.

Code	Load capacity kg	e mm	h mm	a mm	b mm	d mm	g mm	s max. mm	Weight kg/pc.
KLHW 5/6	1.400	94	20	17	71	7	28	1	0,50
KLHW 7	1.900	123	26	20	88	9	34	1	0,90
KLHW 8	2.500	123	26	20	88	10	34	1	0,90
KLHW 10	4.000	144	30	29	107	13	45	1	1,60
KLHW 13	6.700	180	40	35	138	16	52	2	2,90
KLHW 16	10.000	218	50	41	168	20	60	2	5,80
KLHW 20	16.000	260	62	50	194	24	70	2	10,00
KLHW 22	19.000	284	65	52	211	27	81	2	12,80
KLHW 26	26.500	339	79	61	253	33	100	2	21,00

KFW clevis foundry hook		Code	Load capacity kg	e mm	h mm	a mm	g mm	d mm	b mm	Weight kg/pc.
	KFW 7	1.900	121	29	25	64	9	118	1,00	
	KFW 8	2.500	120	29	25	64	10	118	1,00	
	KFW 10	4.000	140	35	32	76	13	143	1,78	
	KFW 13	6.700	170	42	40	89	16	170	2,96	


CAUTION

For applications where jaw size "g" of the KHSW hook is inadequate; mainly in foundries. Before using the hook, check whether hooks without safety catch are allowed to be used for this particular application.

KPW clevis shortening grab hook		Code	Load capacity kg	e mm	b mm	d mm	g mm	Weight kg/pc.
	KPW 5/6	1.400	45	47	7	8	0,19	
	KPW 7	1.900	61	58	9	11	0,38	
	KPW 8	2.500	61	58	10	115	0,38	
	KPW 10	4.000	76	76	13	13	0,85	
	KPW 13	6.700	104	101	16	17	1,90	
	KPW 16	10.000	116	120	20	20	3,60	
	KPW 20	16.000	141	150	24	25	6,15	
	KPW 22	19.000	158	165	27	27	9,00	

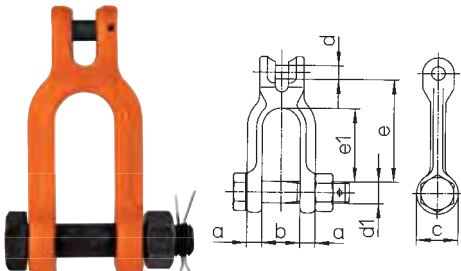
CAUTION

For shortening and for slings that must not tighten. First Grade 100/W clevis grab hook on the market that does not require reduction in load capacity.



CAUTION

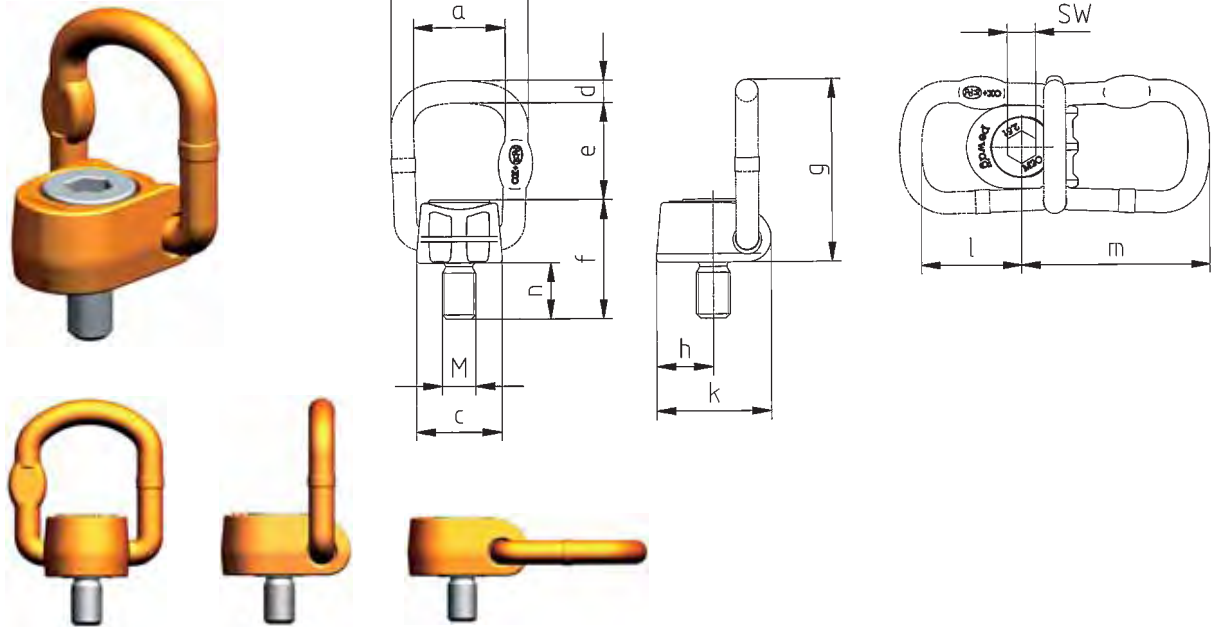
The design of the clevis shortening grab hooks allow for a quick visual check that the chain is seated in the hook's mouth correctly. The design of the hook means that the supported chain link is no longer contacts the bearing surface of the hook, due to the chain being supported by the side faces of the hook. Meaning no deration of the rated capacity.

KSCHW clevis shackle		Code	Load capacity kg	e mm	e1 mm	b mm	a mm	d mm	c mm	d1 mm	Weight kg/pc.
	KSCHW 7	1.900	76	54	28	12	9	31	16	0,49	
	KSCHW 8	2.500	76	54	28	12	10	31	16	0,49	
	KSCHW 10	4.000	105	76	34	16	13	39	20	0,95	
	KSCHW 13	6.700	113	77	44	21	16	50	24	1,89	

Directly attached to the chain. Allows direct connection with other components such as spreader beams.

■ Lifting points

PLAW ProfiLift Alpha



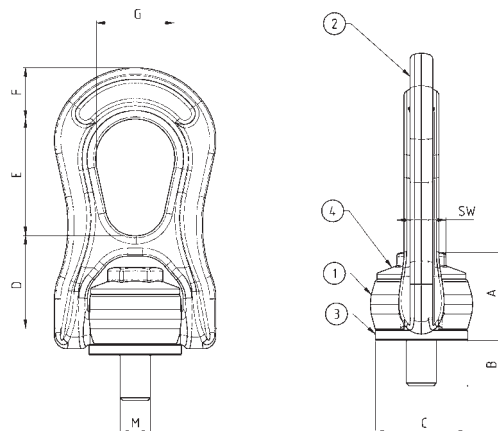
Lifting point Alpha Winner (PLAW) is rotatable and foldable with special captive screw – metric thread and interchangeable clamping spring – The screw can be on request with inch thread.

Code	Thread	Load capacity [kg]	Fastening torque [Nm]	a [mm]	b [mm]	c [mm]	d [mm]	e [mm]	f [mm]	g [mm]	h [mm]	k [mm]	l [mm]	m [mm]	n [mm]	SW [mm]	Weight [kg/pc.]
PLAW 0,3*	M8	300	30	45	67	40	11	44	70	91	23	55	47	85	33	17	0,57
PLAW 0,63	M10	630	60	45	67	40	11	44	70	91	23	55	47	85	33	17	0,57
PLAW 1	M12	1.000	100	45	67	40	11	44	70	91	23	55	47	85	33	17	0,58
PLAW 1,5	M16	1.500	150	45	67	40	11	44	70	91	23	55	47	85	33	17	0,60
PLAW 2,5	M20	2.500	300	54	81	50	13	57	70	107	33	67	60	113	33	17	1,00
PLAW 4	M24	4.000	400	75	115	67	20	70	87	138	45	100	69	130	37	22	2,81
PLAW 6	M30	6.000	500	75	115	67	20	70	99	138	45	100	69	130	50	22	2,96
PLAW 8	M36	8.000	800	93	147	85	27	90	117	180	52	120	85	174	54	32	5,91
PLAW 10	M42	10.000	1000	93	147	85	27	90	126	180	52	120	85	174	63	32	6,16
PLAW 20*	M48	20.000	2000	115	181	105	33	115	165	238	63	150	119	221	73	32	11,91

* PLAW 0,3 and PLAW 20 available only on request!

Method of lifting											
No. of legs	1	1	2	2	2	2	3+4	3+4	2	3+4	
Angle of inclination	0°	90°	0°	90°	0°-45°	45°-60°	0°-45°	45°-60°	asymmetrical	asymmetrical	
Code	Thread	Load capacity [kg]									
PLAW 0,3*	M 8	300	300	600	600	420	300	630	450	300	300
PLAW 0,63	M10	630	630	1250	1250	850	630	1320	900	630	630
PLAW 1	M12	1.000	1.000	2.000	2.000	1.400	1.000	2.100	1.500	1.000	1.000
PLAW 1,5	M16	1.500	1.500	3.000	3.000	2.120	1.500	3.150	2.240	1.500	1.500
PLAW 2,5	M20	2.500	2.500	5.000	5.000	3.550	2.500	5.300	3.750	2.500	2.500
PLAW 4	M24	4.000	4.000	8.000	8.000	5.600	4.000	8.500	6.000	4.000	4.000
PLAW 6	M30	6.000	6.000	12.000	12.000	8.500	6.000	12.650	9.000	6.000	6.000
PLAW 8	M36	8.000	8.000	16.000	16.000	11.250	8.000	16.700	12.000	8.000	8.000
PLAW 10	M42	10.000	10.000	20.000	20.000	14.000	10.000	21.200	15.000	10.000	10.000
PLAW 20*	M48	20.000	20.000	40.000	40.000	28.000	20.000	42.000	30.000	20.000	20.000

PLBW ProfiLift Beta




Profilift Beta Winner (PLBW) is 360° rotatable and 180° foldable, with exchangeable special screw and spring. Due to patented spring the ring can be hold in all positions. The screw can be metric or on request with inch thread.

Code	Thread	Load capacity [kg]	Fastening torque [Nm]	a [mm]	b [mm]	c [mm]	d [mm]	e [mm]	f [mm]	g [mm]	SW [mm]	Weight [kg/pc.]
PLBW 0,3 t	M 8	300	6	27.8	14.2	30	30.2	38	17.5	27	15	0,30
PLBW 0,8 t	M10	800	10	27.8	16.2	30	30.2	38	17.5	27	15	0,31
PLBW 1,2 t	M12	1.200	15	27.8	18.2	30	30.2	38	17.5	27	15	0,32
PLBW 1,3 t	M14	1.300	30	43.2	22.3	45	45	55	25	38	24	1,03
PLBW 2 t	M16	2.000	50	43.2	24.3	45	45	55	25	38	24	1,04
PLBW 2 t	M18	2.000	70	43.2	27.3	45	45	55	25	38	24	1,07
PLBW 2,7 t	M20	2.700	100	43.2	30.3	45	45	55	25	38	24	1,08
PLBW 3 t	M22	3.000	120	64.1	33.4	67.5	67.8	85	37.5	58	36	3,52
PLBW 5 t	M24	5.000	160	64.1	36.4	67.5	67.8	85	37.5	58	36	3,55
PLBW 5 t	M27	5.000	200	64.1	40.4	67.5	67.8	85	37.5	58	36	3,60
PLBW 6,3 t	M30	6.300	250	64.1	45.4	67.5	67.8	85	37.5	58	36	3,68
PLBW 8 t	M33	8.000	250	106.3	53.7	108	108.8	132	60	91	55	14,32
PLBW 10 t	M36	10.000	320	106.3	58.7	108	108.8	132	60	91	55	14,43
PLBW 12,5 t	M42	12.500	400	106.3	68.7	108	108.8	132	60	91	55	14,72
PLBW 15 t	M48	15.000	600	106.3	73.7	108	108,8	132	60	91	55	15,03

Method of lifting											
No. of legs	1	1	2	2	2	2	3+4	3+4	2	3+4	
Angle of inclination	0°	90°	0°	90°	0°-45°	45°-60°	0°-45°	45°-60°	asymmetrical	asymmetrical	
Code	Thread	Load capacity [kg]									
PLBW 0,3 t	M 8	300	300	600	600	420	300	630	450	300	300
PLBW 0,8 t	M10	800	800	1.600	1.600	1.100	800	1.680	1.200	800	800
PLBW 1,2 t	M12	1.200	1.200	2.400	2.400	1.600	1.200	2.520	1.800	1.200	1.200
PLBW 1,3 t	M14	1.300	1.300	2.600	2.600	1.800	1.300	2.730	1.950	1.300	1.300
PLBW 2 t	M16	2.000	2.000	4.000	4.000	2.800	2.000	4.200	3.000	2.000	2.000
PLBW 2 t	M18	2.000	2.000	4.000	4.000	2.800	2.000	4.200	3.000	2.000	2.000
PLBW 2,7 t	M20	2.700	2.700	5.400	5.400	3.800	2.700	5.670	4.050	2.700	2.700
PLBW 3 t	M22	3.000	3.000	6.000	6.000	4.200	3.000	6.300	4.500	3.000	3.000
PLBW 5 t	M24	5.000	5.000	10.000	10.000	7.000	5.000	7.800	7.500	5.000	5.000
PLBW 5 t	M27	5.000	5.000	10.000	10.000	7.000	5.000	10.500	7.500	5.000	5.000
PLBW 6,3 t	M30	6.300	6.300	12.600	12.600	8.900	6.300	13.230	9.450	6.300	6.300
PLBW 8 t	M33	8.000	8.000	16.000	16.000	11.300	8.000	16.800	12.000	8.000	8.000
PLBW 10 t	M36	10.000	10.000	20.000	20.000	14.100	10.000	21.000	15.000	10.000	10.000
PLBW 12,5 t	M42	12.500	12.500	25.000	25.000	17.500	12.500	26.250	18.750	12.500	12.500
PLBW 15 t	M48	15.000	15.000	30.000	30.000	21.000	15.000	31.500	22.500	15.000	15.000

Pints / Bolts / Screws – retaining sets	Code	For accessory part
 <p>Connex bolts + safety catch</p>	CBHW 5 G10	CW 5
	CBHW 6 G10	CW 6
	CBHW 7 G10	CW 7
	CBHW 8 G10	CW 8, CARW 8
	CBHW 10 G10	CW 10, CARW 10
	CBHW 13 G10	CW 13, CARW 13
	CBHW 16 G10	CW 16, CARW 16
	CBHW 20 G10	CW 20
	CBHW 22 G10	CW 22, CARW 22
	CBHW 26 G10	CW 26
 <p>CLW tamper proof device</p>	CBH 32	C 32
	CLBHW 7 G10	CLW 7
	CLBHW 10 G10	CLW 10
	CLBHW 13 G10	CLW 13
 <p>PSW safety catch</p>	CLBHW 16 G10	CLW 16
	PSGW 7/8 G10	PSW 7/8
	PSGW 10 G10	PSW 10
	PSGW 13 G10	PSW 13
 <p>Clevis shackle bolt set bolt – nut – split – pin</p>	PSGW 16 G10	PSW 16
	KBMSW 7/8 G10	KSCHW 7, KSCHW 8
	KBMSW 10 G10	KSCHW 10
	KBMSW 13 G10	KSCHW 13

Trigger sets for self locking hooks	Code	For hook type
 <p>Self locking hook trigger set</p>	VLHW 5/6 G10 ¹⁾	LHW 5/6, KLHW 5/6, WLH(B)W 6
	VLHW 7/8 G10 ¹⁾	LHW 7/8, KLHW 7, KLHW 8, WLH(B)W 7/8
	VLHW 10 G10 ¹⁾	LHW 10, KLHW 10, WLH(B)W 10
	VLHW 13 G10 ¹⁾	LHW 13, KLHW 13, WLH(B)W 13
	VLHW 16 G10 ¹⁾	LHW 16, KLHW 16, WLH(B)W 16
	VLHW 20/22 G10 ¹⁾	LHW 20, LHW 22

¹⁾ Please indicate the hook model & size.



Information for use, storage and maintenance of Grade 100 chain slings

General

Lifting accessories can be used for general lifting purposes covering a wide range of designs, loads and slings. Detailed information of all chain, components and chain slings are given in this catalogue and follows the Uniformed Load Method of Rating as standard.

In addition, there is also an alternative method of rating the capacity of chain slings (Trigonometric Method). This method should only be used where the weight and distribution of the load and the angles of the sling legs are known, and when the lift has been carefully planned and is supervised by a competent person. In such applications please contact our technical department, as the information given in this catalogue does not include details on chain sling rating using this alternative method of rating!

Chain slings should be used only by trained personnel. If properly used, chain slings have a long service life and offer a high degree of safety. Personal injury and damage to property can only be prevented by proper use. It is therefore highly important that you read and understand this user information and act in a responsible and forward-thinking manner when using lifting equipment.

Limitations on use

When modifying or repairing chain slings use only supplied original parts (e.g. bolts, safety pins, screws, etc.).

The configuration of the slings must not be modified – e.g. by bending, grinding, separating individual parts, drilling, etc. Never heat the chains to more than 200°C (Winner 200 Grade 100).

Do not remove any safety components, such as latches, safety pins, safety catches, etc.

Do not apply any surface coatings to chain slings, i.e. do not subject them to hot galvanizing or electrogalvanizing.

Dipping or removing the coating with chemicals is also dangerous and must be agreed upon by Active Lifting.

If required please contact Active Lifting who will be pleased to provide information.

Restrictions of use due to hazardous or dangerous conditions

(see table on page 7 of catalogue)

Temperature

The reduction of load capacity caused by high temperatures, as stated on page 7, ceases once the chain and/or lifting component reaches room temperature again. Lifting accessories must not be used outside the stated temperature range. In the event of temperatures outside this range, do not use the sling chains, and remove from service.

Acids, caustics and chemicals

Do not subject lifting accessories to acid or caustic solutions or in acid or caustic-laden atmospheres. Important: Certain production procedures release acids and/or fumes.

Use of lifting accessories in highly concentrated chemicals in combination with high temperatures is only allowed upon explicit prior approval.

Working Load Limit (WLL)

The working load limits in this catalogue and those on the sling have been determined on the basis that the loading of the chain sling is symmetrical and there are no particularly hazardous conditions. Such hazardous conditions would be offshore applications, the lifting of people and potentially dangerous loads, such as liquid metals, corrosive or caustic substances or nuclear material. When a chain is used in choke hitch, i.e. with the sling leg passed around a load and hooked or linked back onto the chain the working load (WLL) of the chain sling should be no more than 80% of that marked on the sling.

For Asymmetrical (unequally loaded) chain slings the lift should be referred to a competent person to establish a safe rating for the chain sling. Edge loadings - care should be taken when using chain slings around sharp corners, as this will affect the working load (WLL) of the sling. If the chain sling is to be used for such purposes, the extent of the risk is to be assessed by an expert and the safe working load be adjusted accordingly (see page 10 for recommendations).

Inspections and tests

Before using any lifting equipment for the first time, it should be ensured that:

- ▶ The chain sling corresponds exactly to the order;
- ▶ The inspection certificate or certificate of conformity has been supplied;
- ▶ Marking and load capacity stated on the chain correspond to the information given on the inspection certificate or certificate of conformity;
- ▶ All particularities of the sling chain have been entered into a register of lifting equipment, if required.
- ▶ Instructions for the proper use of sling chains has been supplied and read and understood by personnel.

Information for use

Before each use

Check the chains before each use for visible damage or signs of wear. In case of doubt or damage do not use the chains and have them inspected by a competent person or return them to Active Lifting for inspection.

Periodic Thorough Examinations

After extraordinary, unusual events that could cause impairment of the sling chain, the chain must be checked by an expert (e.g. after exposure to uncontrolled heat). As per EN818 we recommend subjecting the chain every two years to a load test with 2 times the load capacity, followed by a visual inspection, or to another type of cracking test (fluxing).

Elimination criteria following visual inspection

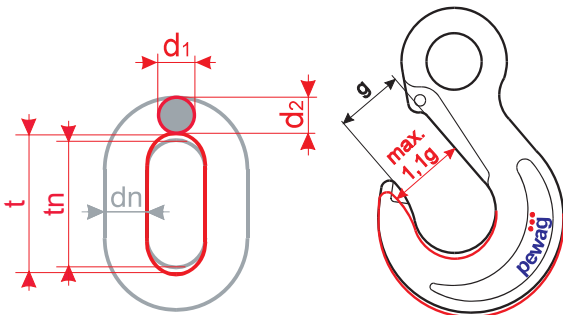
- Broken components
- Missing or illegible marking of the chain sling, i.e. identification data and/or load capacity data
- Deformation of suspension or sling parts or the chain itself
- Elongation of the chain. The chain must be discarded if

$$t > 1,05 t_n$$

- Wear is determined as the mean value of two measurements of diameters d_1 and d_2 carried out at a right angle (see picture).

The chain must be discarded if

$$d_m = \frac{d_1 + d_2}{2} \leq 0,9 d_m$$



- Cuts, notches, grooves, surface cracks, excessive corrosion, discoloration due to heat, signs of subsequent welding, bent or twisted links or other flaws.

- Cracks: Chains with cross-cracks that are visible to the naked eye must be discarded.

- Missing or non-functional safety device (safety catches if fitted) as well as signs of widening or twisting of hooks, i.e. noticeable enlargement of the opening or other forms of deformation. The enlargement of the opening must not exceed 10 % of the nominal value.

Maximal approved dimensional change:

designation	dimensions	admissible deviation
chain	d m	- 10%
	tn	+ 5%
links	d	- 15%
	t	+ 10%
hooks *)	e	+ 5%
	d2 und h	- 10%
	g	+ 10%
CW	Halves loose	none
	e	+ 5%
	c	- 10%
BWW, GWH	e	+ 5%
	d	- 15%
	d1	+ 5%
	△ angle	≤ 3°
	angle	≥ 90°
Sch, GSch, U	bolt loose	none
	e	+ 5%
	d, d1, d2 and M	- 10%
SM	e	+ 5%
	g	+ 10%
	d	- 10%
BA	d2	-10%
FA	d1	-10%
clevis and Connex-pin	d	-10%
LHW, KLHW, WLH(B)W	d2	- 10%
	h	- 10%
	opening of hook	2 x s max.

* HSW, LHW, WS, FW, PW, X, DF, KHSW, KLHW, KFW, KPW, KVS, XKW, KOW, KAW, KRW

Repair

Lifting components and chain slings should only be repaired by qualified personnel using genuine parts.

Documentation

Records of inspections, and in particular their findings, as well as details of repairs carried out must be kept on file during the entire service life the chain sling.

Storage

Sling chains should be stored in cleaned and dried condition and protected from corrosion, e.g. lightly lubricated.

Correct use of chain slings

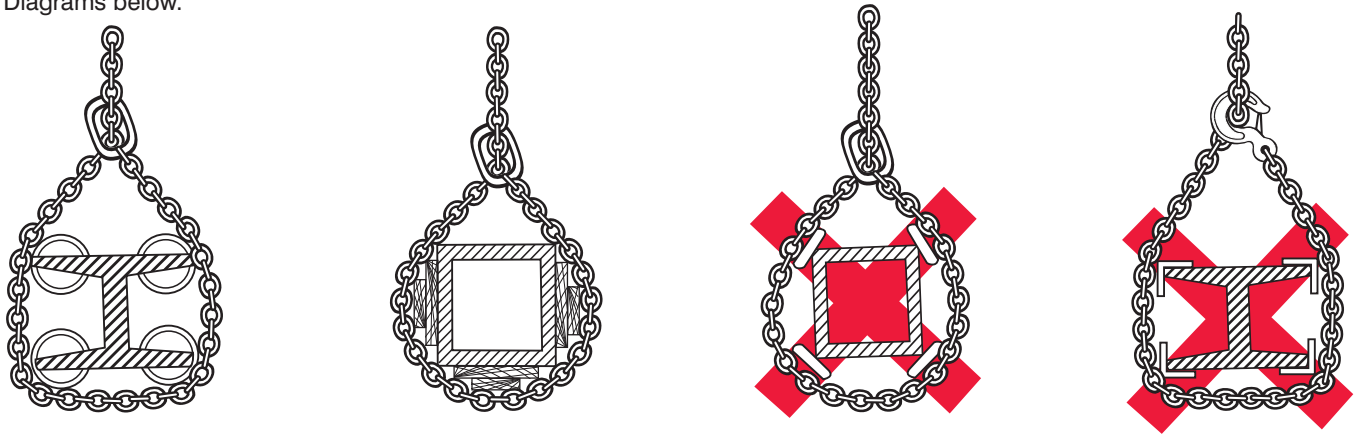
Sling Angle – sling points

Select slinging points and chain type in such a way that the sling angle of all chain strands (legs) lie within the data given on the working load tag. All sling angle should preferably be the same. Avoid sling angle of less than 30°, because of the high risk of load instability. Never use chain slings with the sling angle exceeding 120°.

Edge load – protection of load and chain

The maximum load capacity of chain slings was defined under the assumption that the individual chain legs are pulled straight under load, i.e. that they do not run over edges.

In the case of edge loading, load protection (packing) should to be used to avoid damage. For correct and incorrect use see Diagrams below.



If chains are guided over edges without proper protection, their load capacity is reduced. For the corresponding load factors please refer to the table on page 7.

Impact

The maximum load capacity of chain slings are defined under the assumption that the load on the individual chain strands (legs) is applied without any impact or shock loading. Chain slings must never be shock loaded.

Fatigue

pewag lifting chains and components are tested to 20.000 cycles. In case of high dynamic stress there is a risk of damage. According to the "Berufsgenossenschaft Metall Nord Süd" the stress at load capacity limit can be reduced by using higher dimensioned chains and components.

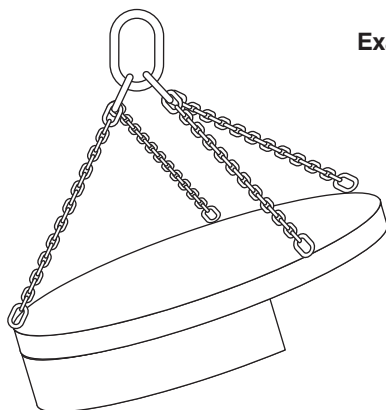
Symmetrical loading

The load capacities of chain slings are defined with the assumption that the load of the individual chain strands (legs) is symmetrically distributed. Lifting of the load then leads to identical sling angles, and the individual strands (legs) are symmetrical to each other.

The load can still be considered symmetrical when the following conditions are met:

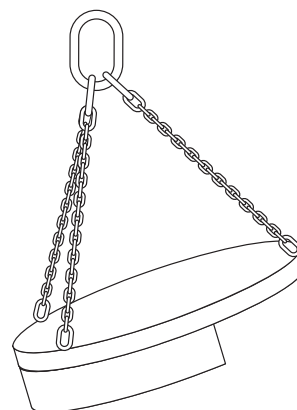
- ▶ The load is smaller than 80 % of the stated load capacity (WLL).
- ▶ The chain sling leg angles to the vertical are all not less than 15°.
- ▶ The angles to the vertical of all chain legs are identical or deviate max. 15° from each other.
- ▶ In the case of three and four strand sling chains, the plan angles are within 15° of each other.

Information for use Grade 100 chain slings



Example of asymmetry

The majority of the load is carried by 1 strand (leg)



The majority of the load is carried by 2 strand (legs)

If all of the listed parameters are not met, load is considered to be asymmetric and an expert must be called in to assess the lifting process. In case of doubt, only one chain strand (leg) should be considered as load-bearing. For the corresponding load capacity please refer to the load capacity table.

Use of chain slings for other than the intended purposes

Use chain sling only for the intended purpose. In cases where not all individual strands (legs) are used simultaneously or where several sling chains are used at the same time, please refer to the load capacity table to find out the load capacity. In case of doubt or as an alternative, change the load capacity according to the following rating tags of the following table.

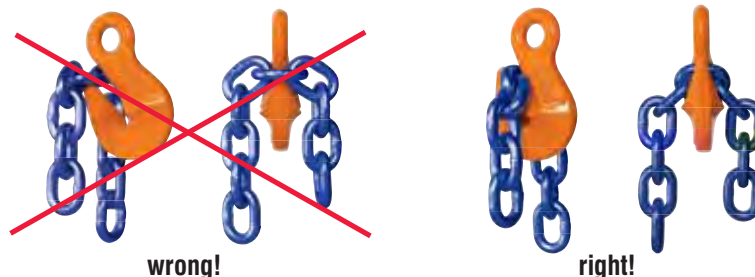
Type of sling chain	Number of individual strands used	Use factor in relation to the load capacity given on the tag
two-stranded (2-leg)	1	1/2
three- and four-stranded (3/4-leg)	2	1
three- and four-stranded (3/4-leg)	1	1/2
2 x single-stranded (single leg)	2	see load factor on load chart page 7
2 x two-stranded (2 leg)	3 or 4	1

Hang any individual strands (leg) that you do not use, back into the master link to prevent hazards caused by freely swinging chains or unintended hooking.

Before using several chain slings at the same time, make sure that the crane hook is big enough for all the master rings. Make sure that the master rings cannot fall out of the hook during lifting. No sling angles of more than 45° allowed. Use only chain slings of the same nominal thickness and grade at the same time.

Additional detailed information

Do not tip load the hook!



All data in this catalogue is non-binding, and subject to changes without prior notice.